

1-BEDROOM

Type A1

45 sqm / 484 sq ft

Blk 5: #04-14 to #22-14

Blk 5: #04-17 to #22-17

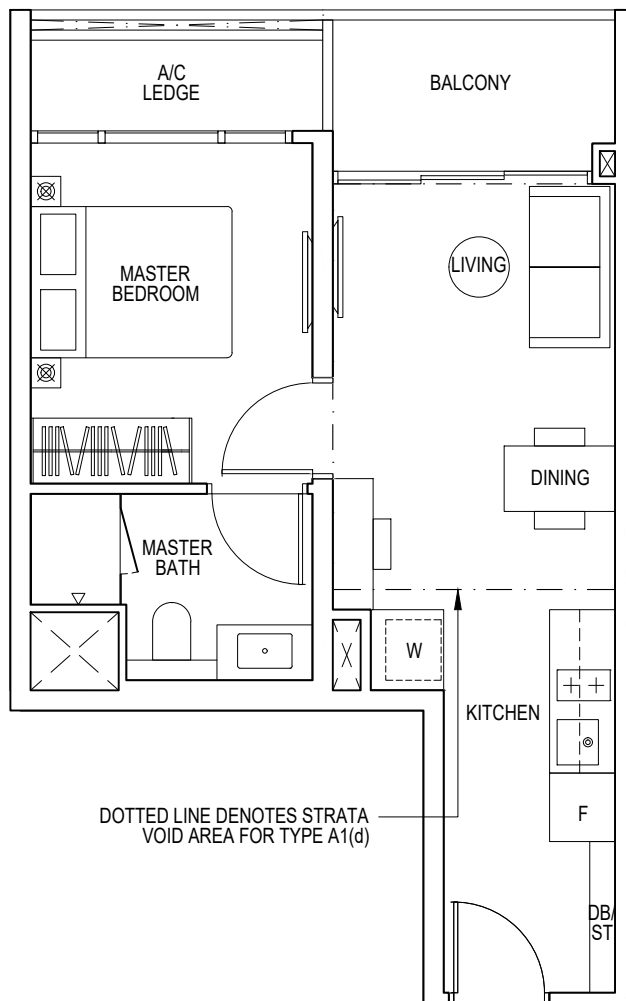
Type A1(d)

58 sqm / 624 sq ft

(inclusive of 13m² strata void over living/dining)

Blk 5: #23-14

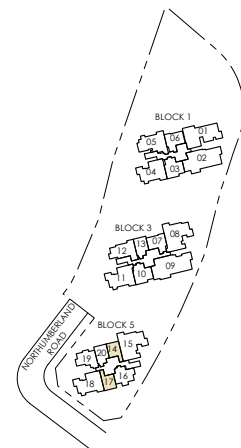
Blk 5: #23-17



F FRIDGE W WASHER/ DRYER DB DISTRIBUTION BOARD HS HOUSEHOLD SHELTER ST STORAGE
 RC REINFORCED CONCRETE LEDGE (EXCLUDED FROM STRATA AREA)



Area includes air-con (A/C) ledge, balcony and strata void area where applicable. The plans are subject to change as may be approved by relevant authorities. All floor plans are approximate measurements only and are subject to government re-survey. The balcony shall not be enclosed unless with the approved balcony screen. For an illustration of the approved balcony screen, please refer to the diagram annexed hereto as "Annexure A".



Key plan is not drawn to scale



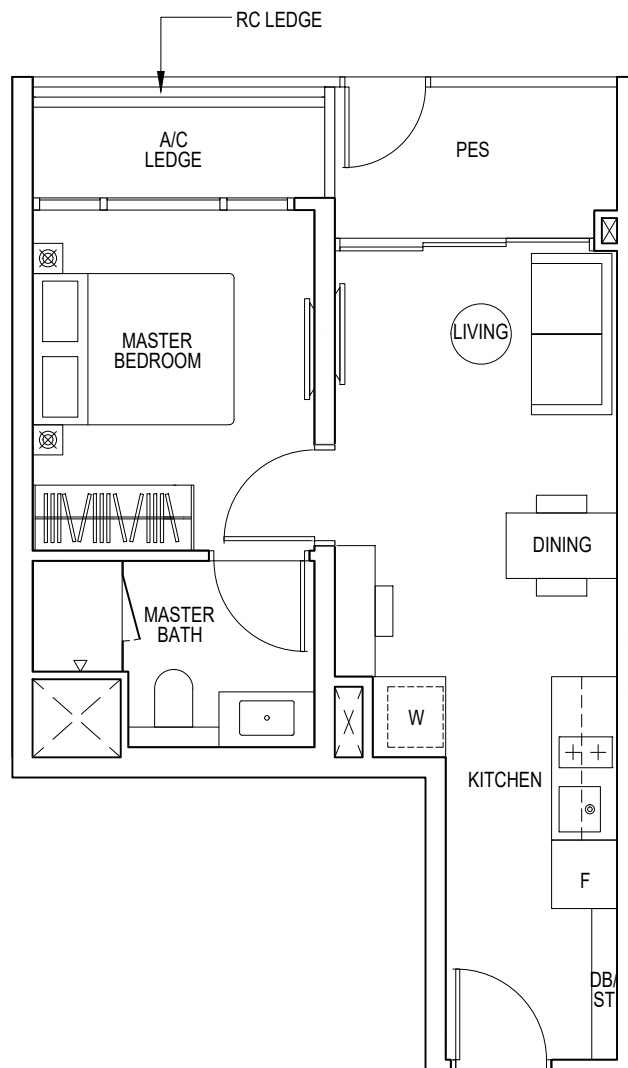
1-BEDROOM

Type A1(p)

45 sqm / 484 sq ft

Blk 5: #03-14

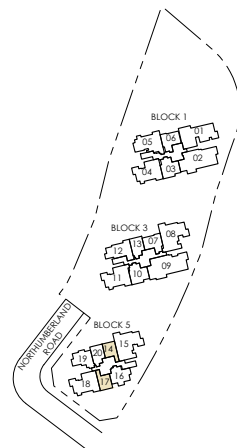
Blk 5: #03-17



F FRIDGE W WASHER/ DRYER DB DISTRIBUTION BOARD HS HOUSEHOLD SHELTER ST STORAGE
 RC REINFORCED CONCRETE LEDGE (EXCLUDED FROM STRATA AREA)



Area includes air-con (A/C) ledge, balcony and strata void area where applicable. The plans are subject to change as may be approved by relevant authorities. All floor plans are approximate measurements only and are subject to government re-survey. The balcony shall not be enclosed unless with the approved balcony screen. For an illustration of the approved balcony screen, please refer to the diagram annexed hereto as "Annexure A".



Key plan is not drawn to scale

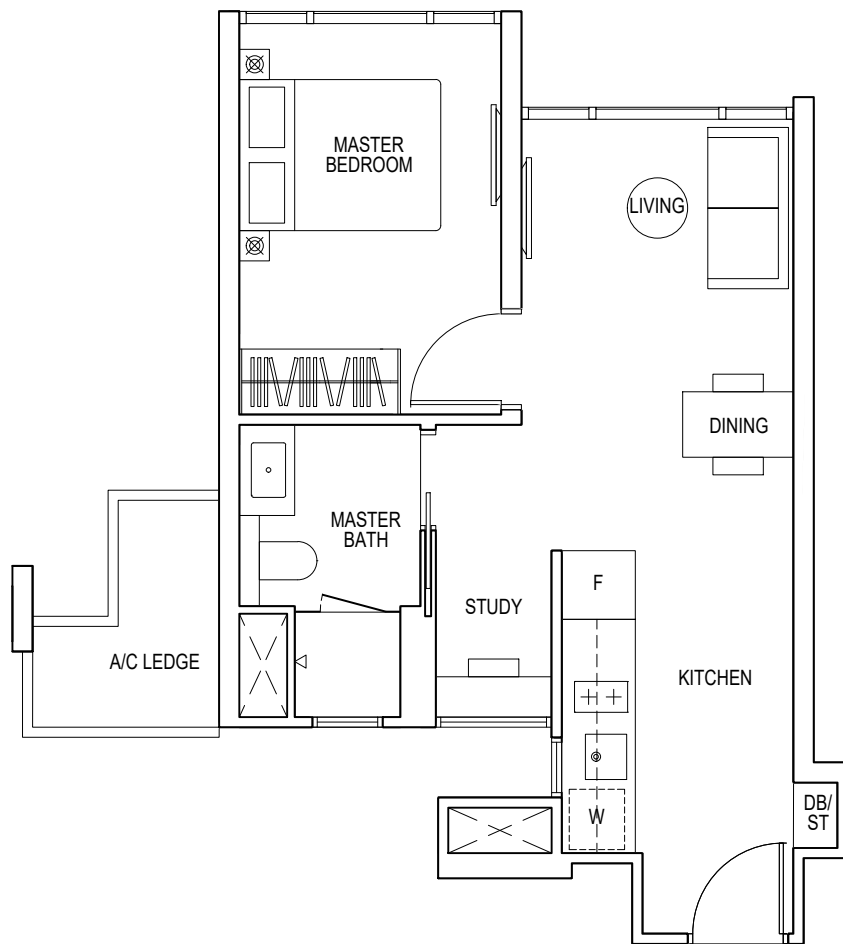


1-BEDROOM + STUDY

Type A2S

45 sqm / 484 sq ft

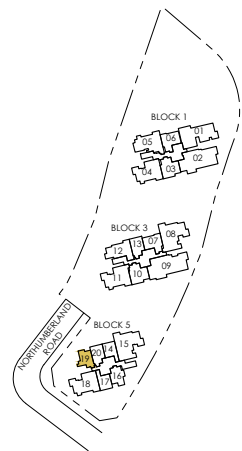
Blk 5: #03-19



F FRIDGE W WASHER/ DRYER DB DISTRIBUTION BOARD HS HOUSEHOLD SHELTER ST STORAGE
 RC REINFORCED CONCRETE LEDGE (EXCLUDED FROM STRATA AREA)



Area includes air-con (A/C) ledge, balcony and strata void area where applicable. The plans are subject to change as may be approved by relevant authorities. All floor plans are approximate measurements only and are subject to government re-survey. The balcony shall not be enclosed unless with the approved balcony screen. For an illustration of the approved balcony screen, please refer to the diagram annexed hereto as "Annexure A".



Key plan is not drawn to scale



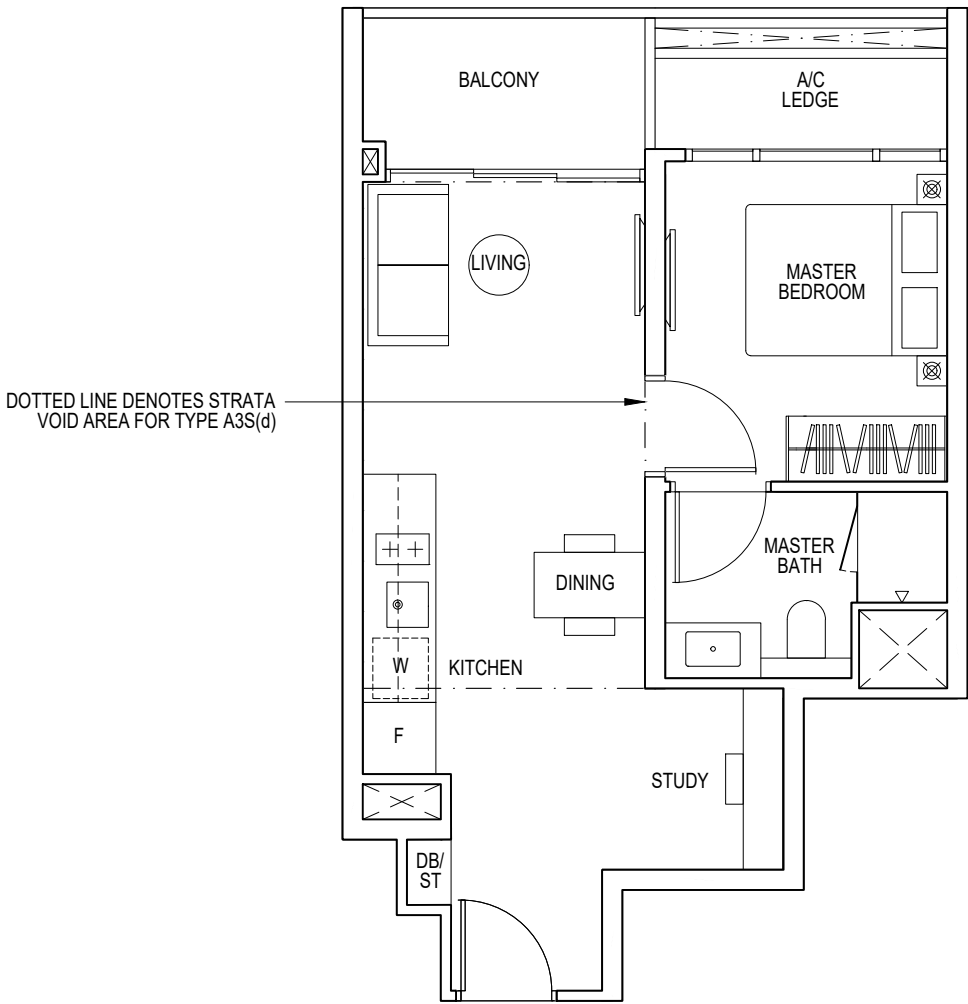
1-BEDROOM + STUDY

Type A3S
48 sqm / 517sq ft

Blk 3: #05-13 to #22-13
Blk 5: #04-20 to #22-20

Type A3S(d)
64 sqm / 689 sq ft

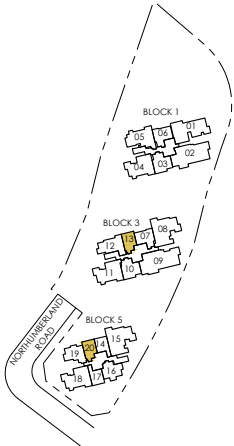
(inclusive of 16m² strata void over living/dining)
Blk 3: #23-13
Blk 5: #23-20



F FRIDGE W WASHER/ DRYER DB DISTRIBUTION BOARD HS HOUSEHOLD SHELTER ST STORAGE
RC REINFORCED CONCRETE LEDGE (EXCLUDED FROM STRATA AREA)



Area includes air-con (A/C) ledge, balcony and strata void area where applicable. The plans are subject to change as may be approved by relevant authorities. All floor plans are approximate measurements only and are subject to government re-survey. The balcony shall not be enclosed unless with the approved balcony screen. For an illustration of the approved balcony screen, please refer to the diagram annexed hereto as "Annexure A".



Key plan is not drawn to scale



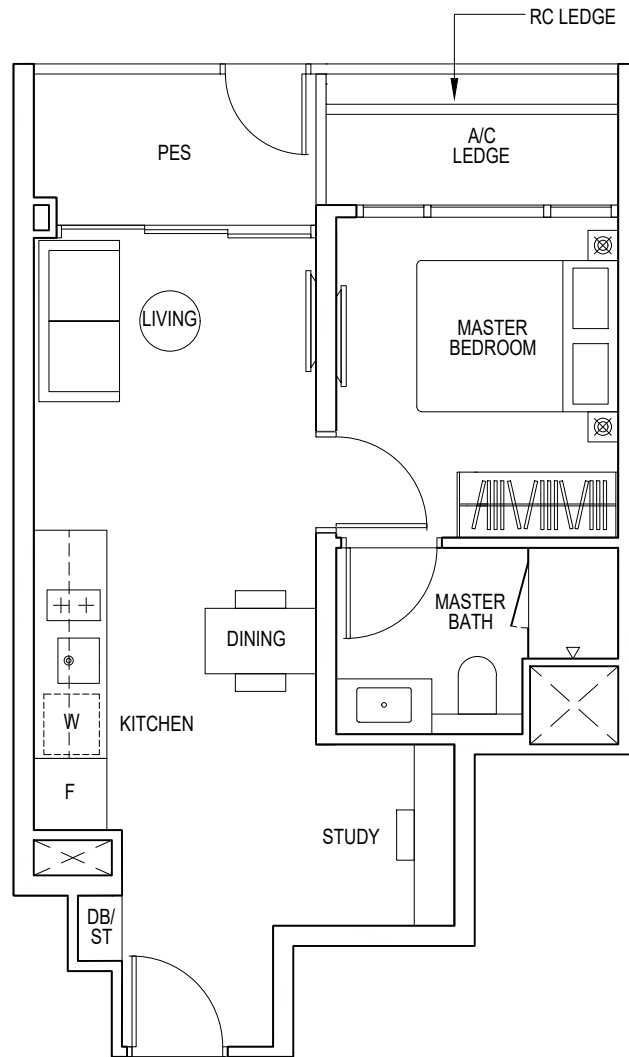
1-BEDROOM + STUDY

Type A3S(p)

48 sqm / 517sq ft

Blk 3: #04-13

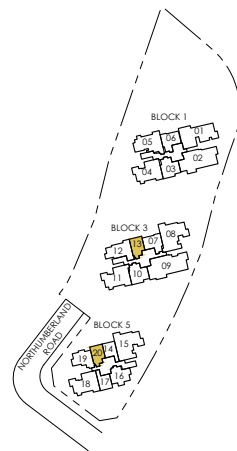
Blk 5: #03-20



F FRIDGE W WASHER/ DRYER DB DISTRIBUTION BOARD HS HOUSEHOLD SHELTER ST STORAGE
 RC REINFORCED CONCRETE LEDGE (EXCLUDED FROM STRATA AREA)



Area includes air-con (AC) ledge, balcony and strata void area where applicable. The plans are subject to change as may be approved by relevant authorities. All floor plans are approximate measurements only and are subject to government re-survey. The balcony shall not be enclosed unless with the approved balcony screen. For an illustration of the approved balcony screen, please refer to the diagram annexed hereto as "Annexure A".



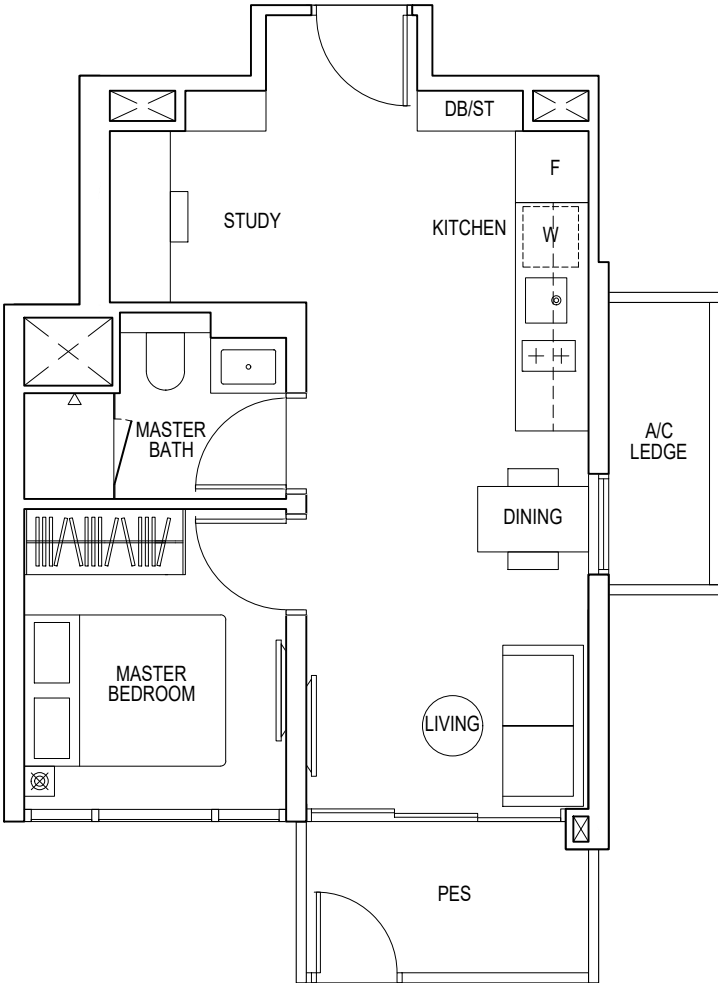
Key plan is not drawn to scale



1-BEDROOM + STUDY

Type A4S(p)
48 sqm / 517 sq ft

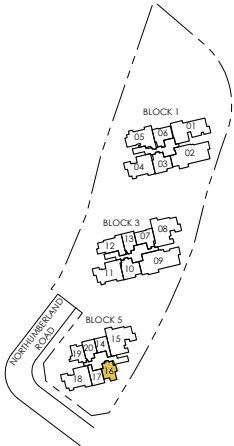
Blk 5: #03-16



F FRIDGE W WASHER/ DRYER DB DISTRIBUTION BOARD HS HOUSEHOLD SHELTER ST STORAGE
RC REINFORCED CONCRETE LEDGE (EXCLUDED FROM STRATA AREA)



Area includes air-con (A/C) ledge, balcony and strata void area where applicable. The plans are subject to change as may be approved by relevant authorities. All floor plans are approximate measurements only and are subject to government re-survey. The balcony shall not be enclosed unless with the approved balcony screen. For an illustration of the approved balcony screen, please refer to the diagram annexed hereto as "Annexure A".



Key plan is not drawn to scale



2-BEDROOM

Type B1

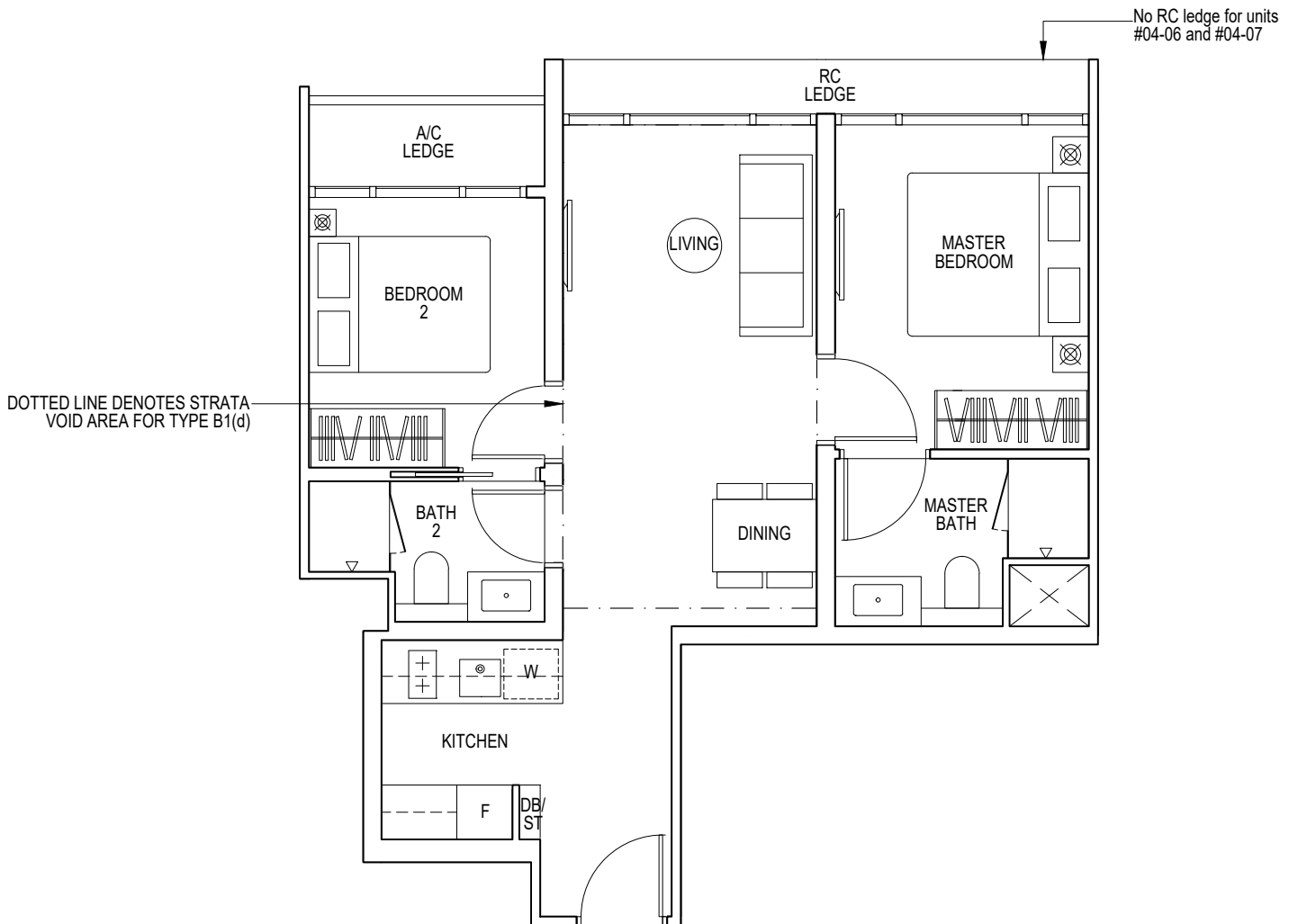
60 sqm / 646 sq ft

Blk 1: #04-06 to #22-06
Blk 3: #04-07* to #22-07*

Type B1(d)

76 sqm / 818 sq ft

(inclusive of 16m² strata void over living/dining)
Blk 1: #23-06
Blk 3: #23-07*

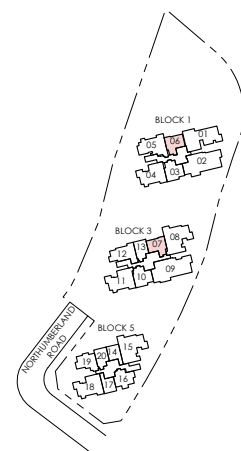


* MIRRORED UNIT

F FRIDGE W WASHER/ DRYER DB DISTRIBUTION BOARD HS HOUSEHOLD SHELTER ST STORAGE
RC REINFORCED CONCRETE LEDGE (EXCLUDED FROM STRATA AREA)



Area includes air-con (A/C) ledge, balcony and strata void area where applicable. The plans are subject to change as may be approved by relevant authorities. All floor plans are approximate measurements only and are subject to government re-survey. The balcony shall not be enclosed unless with the approved balcony screen. For an illustration of the approved balcony screen, please refer to the diagram annexed hereto as "Annexure A".



Key plan is not drawn to scale



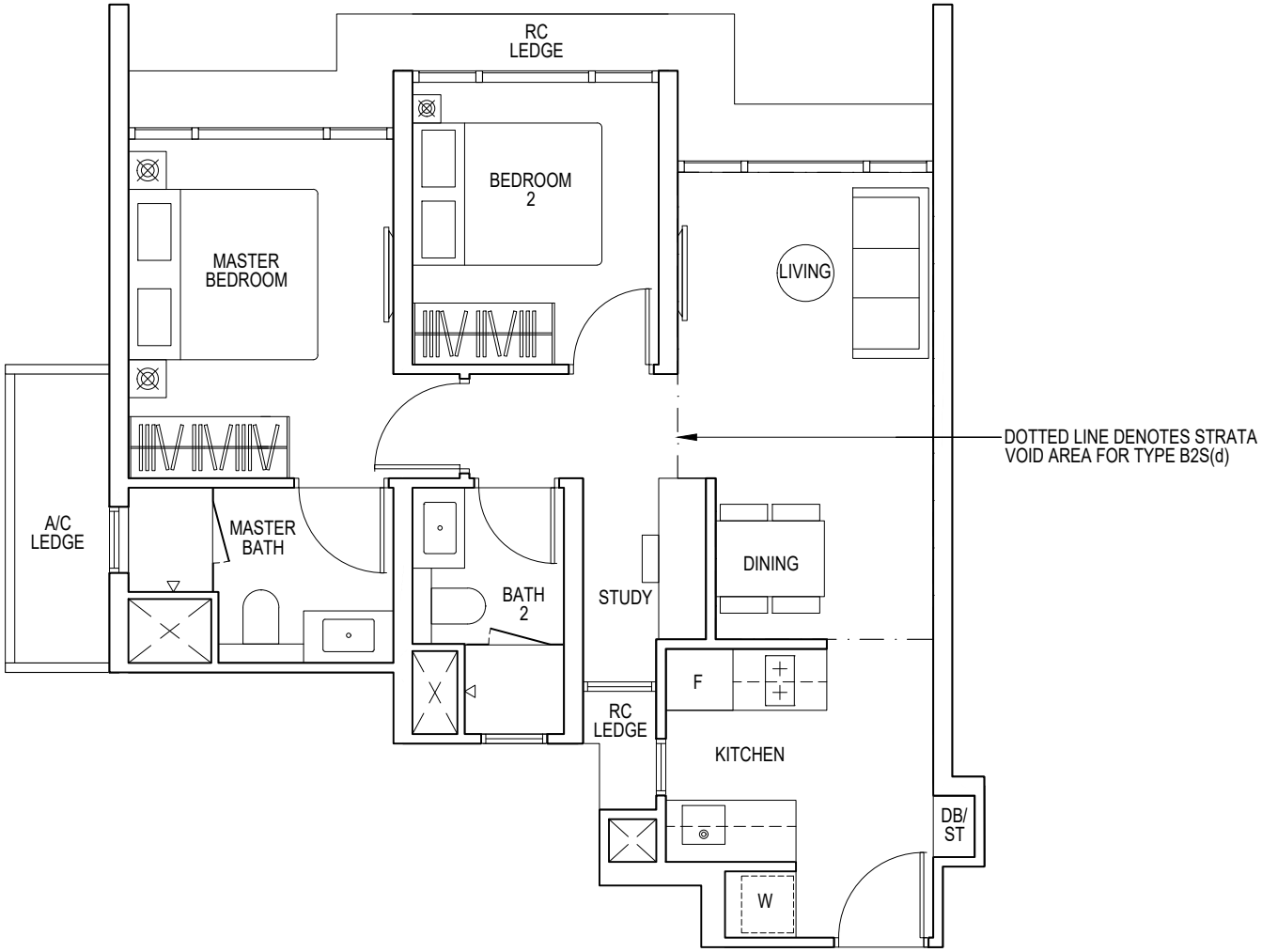
2-BEDROOM + STUDY

Type B2S
63 sqm / 678 sq ft

Blk 5: #04-19 to #22-19

Type B2S(d)
77 sqm / 829 sq ft

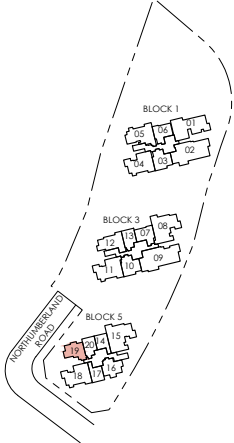
(inclusive of 14m² strata void over living/dining)
Blk 5: #23-19



F FRIDGE W WASHER/ DRYER DB DISTRIBUTION BOARD HS HOUSEHOLD SHELTER ST STORAGE
RC REINFORCED CONCRETE LEDGE (EXCLUDED FROM STRATA AREA)



Area includes air-con (A/C) ledge, balcony and strata void area where applicable. The plans are subject to change as may be approved by relevant authorities. All floor plans are approximate measurements only and are subject to government re-survey. The balcony shall not be enclosed unless with the approved balcony screen. For an illustration of the approved balcony screen, please refer to the diagram annexed hereto as "Annexure A".



Key plan is not drawn to scale



2-BEDROOM + STUDY

Type B3S

66 sqm / 710 sq ft

Blk 1: #05-03 to #22-03

Blk 3: #05-10 to #22-10

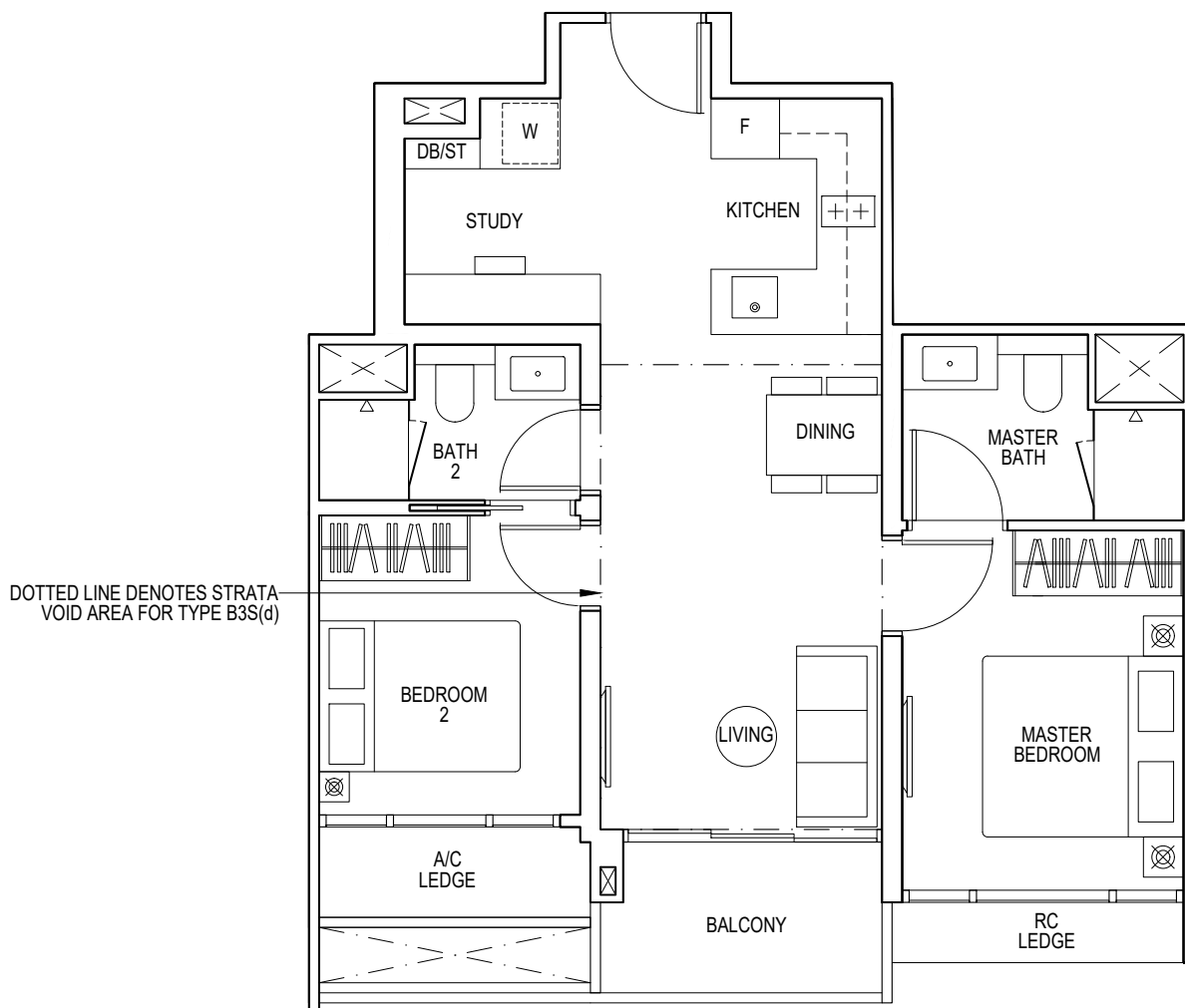
Type B3S(d)

81 sqm / 872 sq ft

(inclusive of 15m² strata void over living/dining)

Blk 1: #23-03

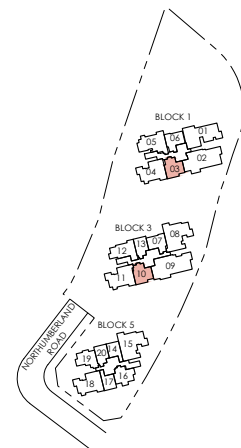
Blk 3: #23-10



F FRIDGE W WASHER/ DRYER DB DISTRIBUTION BOARD HS HOUSEHOLD SHELTER ST STORAGE
 RC REINFORCED CONCRETE LEDGE (EXCLUDED FROM STRATA AREA)



Area includes air-con (A/C) ledge, balcony and strata void area where applicable. The plans are subject to change as may be approved by relevant authorities. All floor plans are approximate measurements only and are subject to government re-survey. The balcony shall not be enclosed unless with the approved balcony screen. For an illustration of the approved balcony screen, please refer to the diagram annexed hereto as "Annexure A".



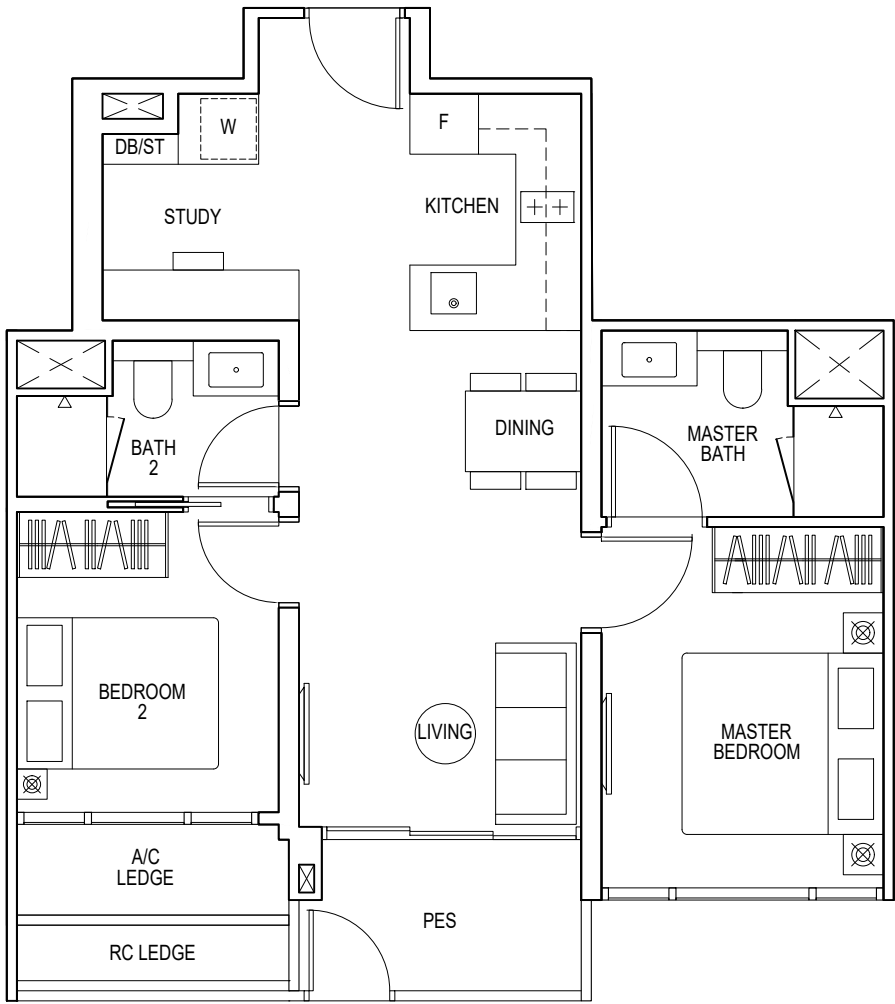
Key plan is not drawn to scale



2-BEDROOM + STUDY

Type B3S(p)
66 sqm / 710 sq ft

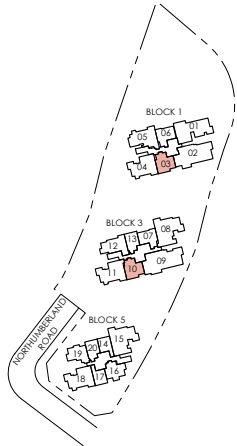
Blk 1: #04-03
Blk 3: #04-10



F FRIDGE W WASHER/ DRYER DB DISTRIBUTION BOARD HS HOUSEHOLD SHELTER ST STORAGE
RC REINFORCED CONCRETE LEDGE (EXCLUDED FROM STRATA AREA)



Area includes air-con (A/C) ledge, balcony and strata void area where applicable. The plans are subject to change as may be approved by relevant authorities. All floor plans are approximate measurements only and are subject to government re-survey. The balcony shall not be enclosed unless with the approved balcony screen. For an illustration of the approved balcony screen, please refer to the diagram annexed hereto as "Annexure A".



Key plan is not drawn to scale



2-BEDROOM + STUDY

Type B4S

66 sqm / 710 sq ft

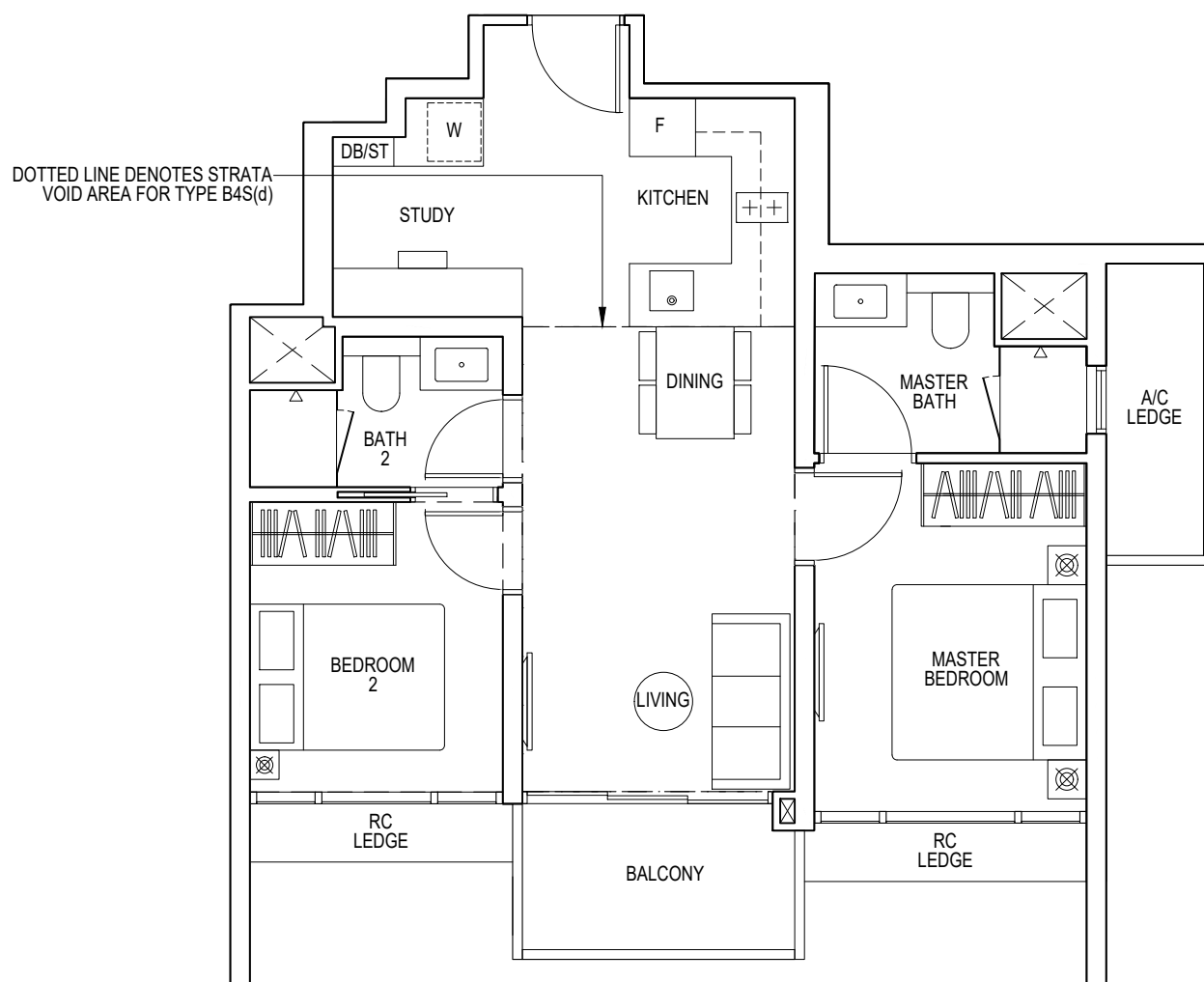
Blk 5: #04-16 to #22-16

Type B4S(d)

81 sqm / 872 sq ft

(inclusive of 15m² strata void over living/dining)

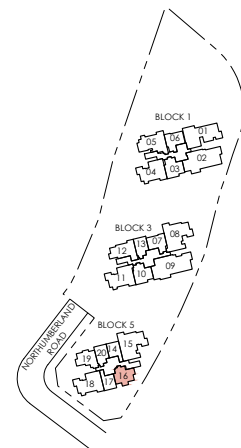
Blk 5: #23-16



F FRIDGE W WASHER/ DRYER DB DISTRIBUTION BOARD HS HOUSEHOLD SHELTER ST STORAGE
 RC REINFORCED CONCRETE LEDGE (EXCLUDED FROM STRATA AREA)



Area includes air-con (A/C) ledge, balcony and strata void area where applicable. The plans are subject to change as may be approved by relevant authorities. All floor plans are approximate measurements only and are subject to government re-survey. The balcony shall not be enclosed unless with the approved balcony screen. For an illustration of the approved balcony screen, please refer to the diagram annexed hereto as "Annexure A".



Key plan is not drawn to scale



3-BEDROOM

Type C1

82 sqm / 883 sq ft

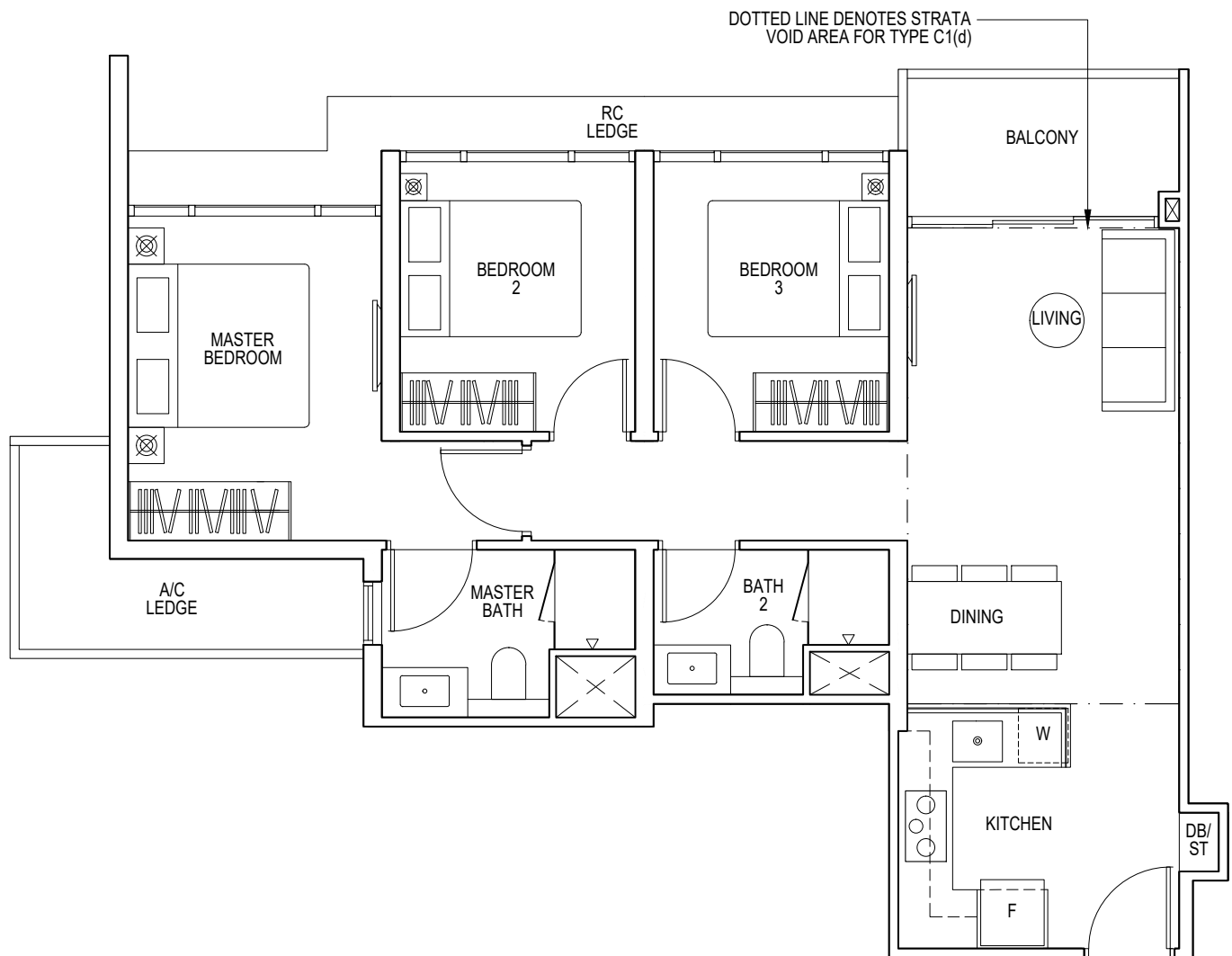
Blk 3: #05-12 to #22-12

Type C1(d)

99 sqm / 1066 sq ft

(inclusive of 17m² strata void over living/dining)

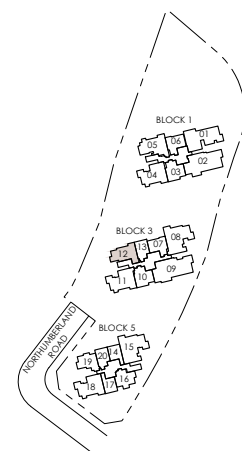
Blk 3: #23-12



F FRIDGE W WASHER/ DRYER DB DISTRIBUTION BOARD HS HOUSEHOLD SHELTER ST STORAGE
 RC REINFORCED CONCRETE LEDGE (EXCLUDED FROM STRATA AREA)



Area includes air-con (A/C) ledge, balcony and strata void area where applicable. The plans are subject to change as may be approved by relevant authorities. All floor plans are approximate measurements only and are subject to government re-survey. The balcony shall not be enclosed unless with the approved balcony screen. For an illustration of the approved balcony screen, please refer to the diagram annexed hereto as "Annexure A".



Key plan is not drawn to scale

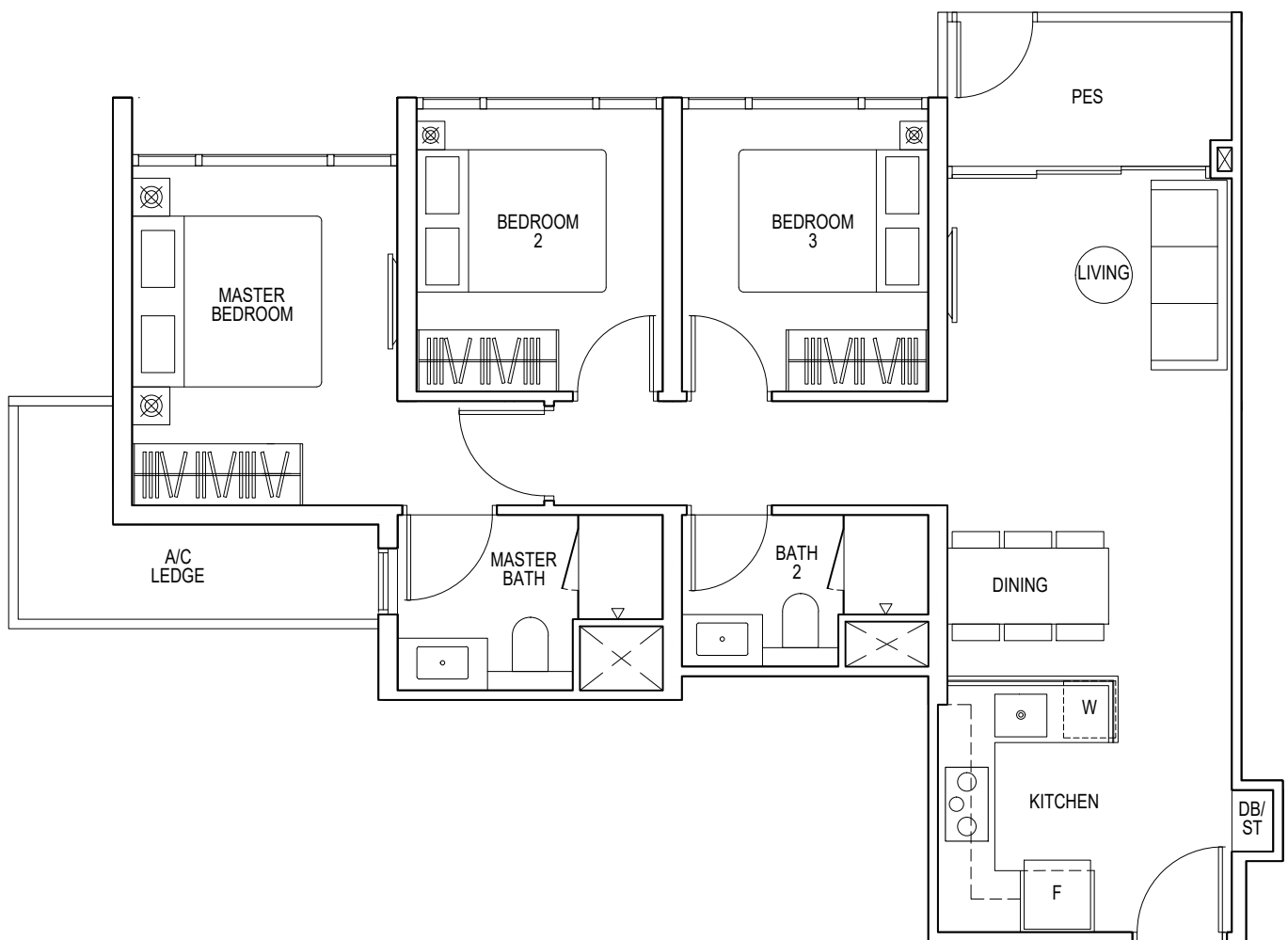


3-BEDROOM

Type C1(p)

82 sqm / 883 sq ft

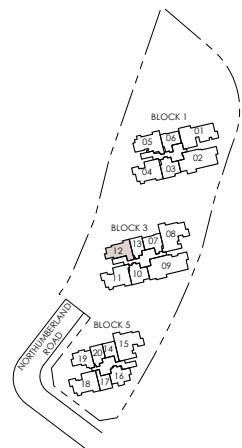
Blk 3: #04-12



F FRIDGE W WASHER/ DRYER DB DISTRIBUTION BOARD HS HOUSEHOLD SHELTER ST STORAGE
 RC REINFORCED CONCRETE LEDGE (EXCLUDED FROM STRATA AREA)



Area includes air-con (AC) ledge, balcony and strata void area where applicable. The plans are subject to change as may be approved by relevant authorities. All floor plans are approximate measurements only and are subject to government re-survey. The balcony shall not be enclosed unless with the approved balcony screen. For an illustration of the approved balcony screen, please refer to the diagram annexed hereto as "Annexure A".



Key plan is not drawn to scale



3-BEDROOM FLEXI

Type C2

100 sqm / 1076 sq ft

Blk 1: #05-04 to #22-04

Blk 5: #04-18 to #22-18

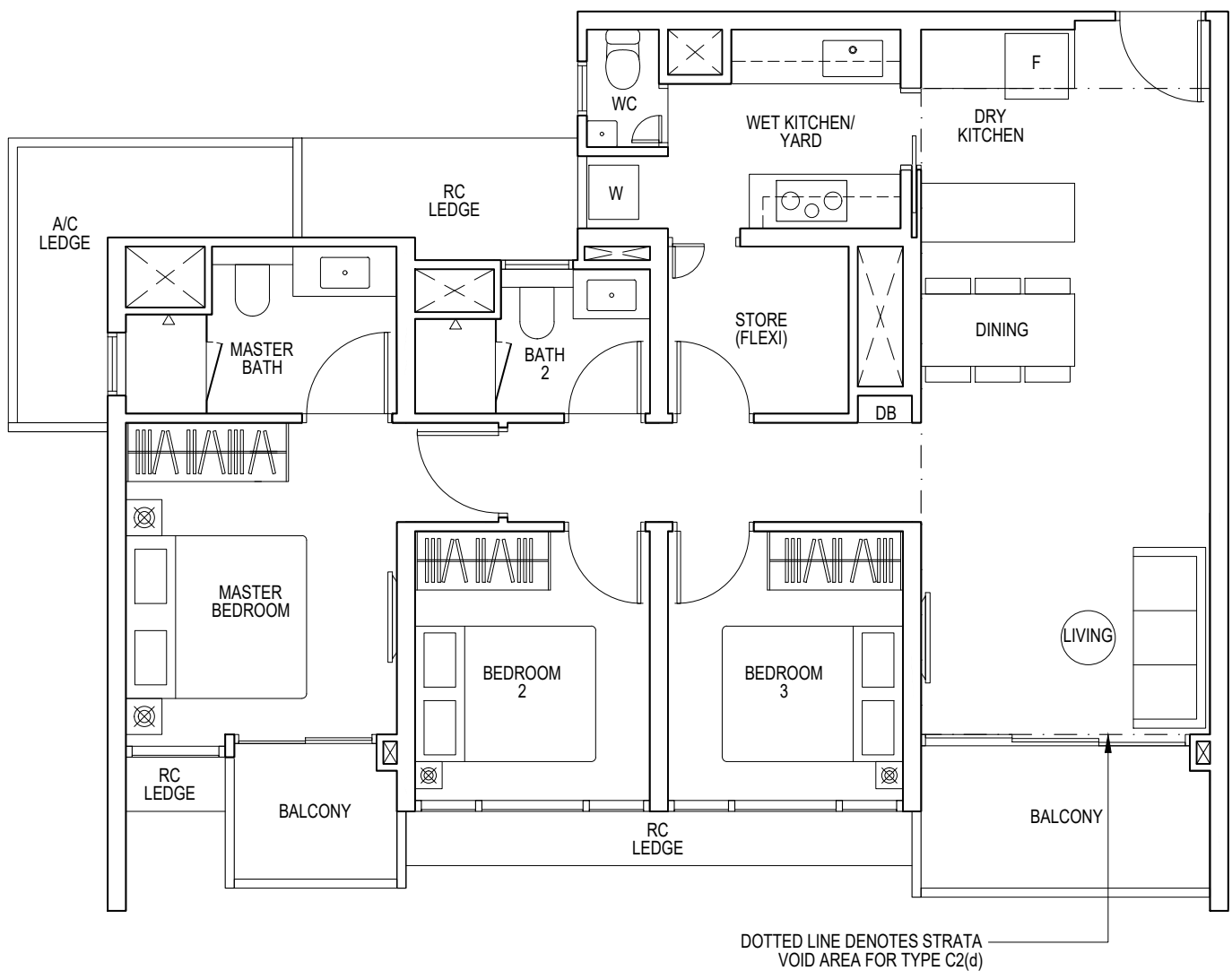
Type C2(d)

125 sqm / 1346 sq ft

(inclusive of 25m² strata void over living/dining)

Blk 1: #23-04

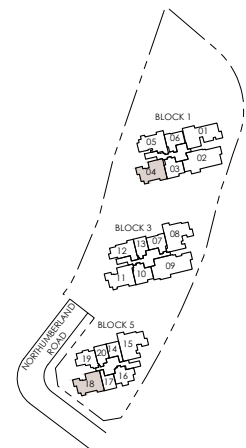
Blk 5: #23-18



F FRIDGE W WASHER/ DRYER DB DISTRIBUTION BOARD HS HOUSEHOLD SHELTER ST STORAGE
 RC REINFORCED CONCRETE LEDGE (EXCLUDED FROM STRATA AREA)



Area includes air-con (AC) ledge, balcony and strata void area where applicable. The plans are subject to change as may be approved by relevant authorities. All floor plans are approximate measurements only and are subject to government re-survey. The balcony shall not be enclosed unless with the approved balcony screen. For an illustration of the approved balcony screen, please refer to the diagram annexed hereto as "Annexure A".



Key plan is not drawn to scale



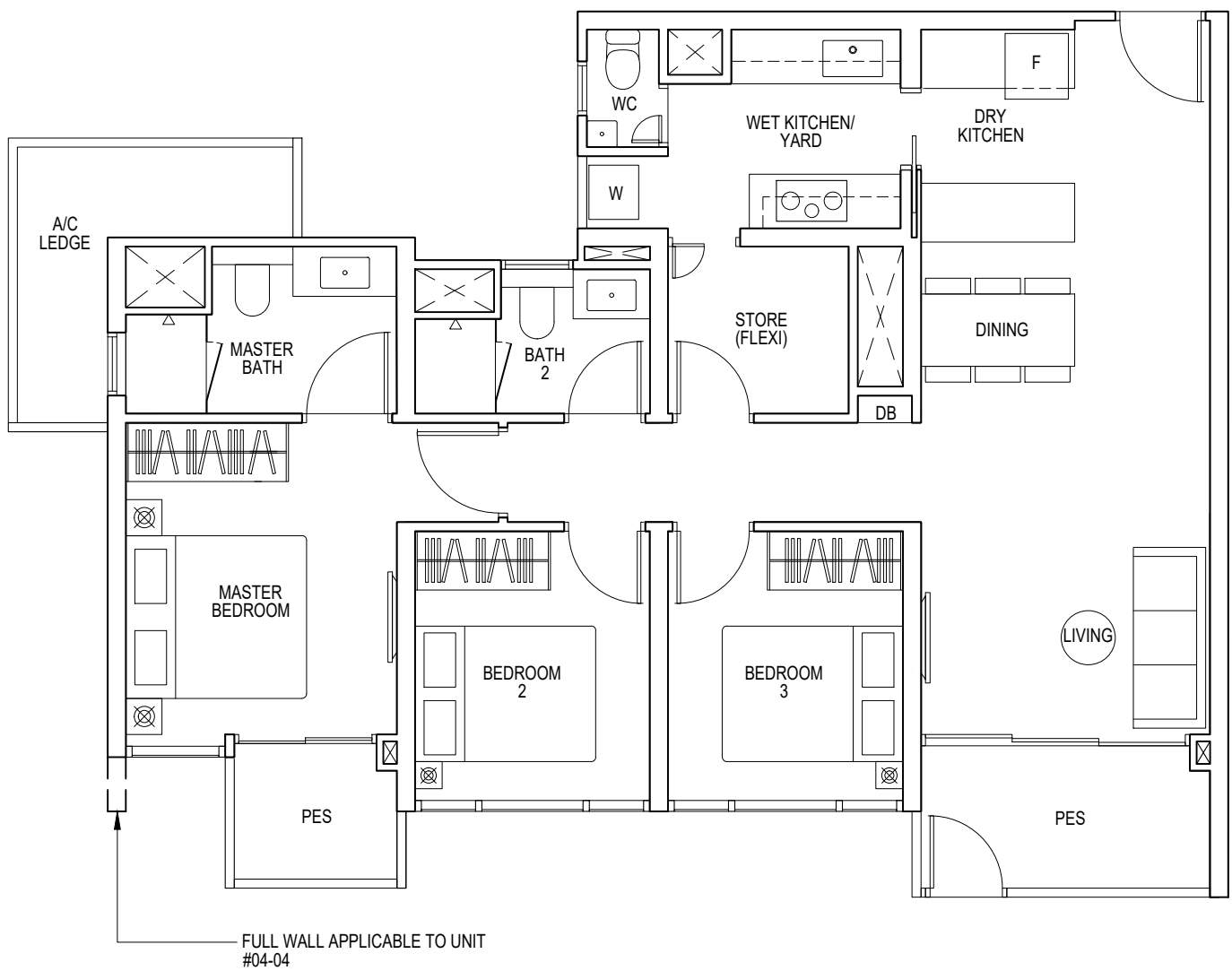
3-BEDROOM FLEXI

Type C2(p)

100 sqm / 1076 sq ft

Blk 1: #04-04

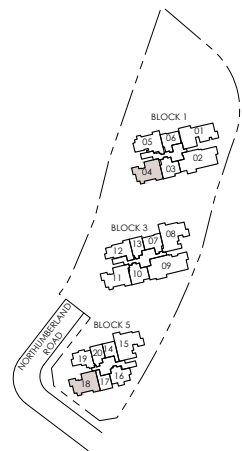
Blk 5: #03-18



F FRIDGE W WASHER/ DRYER DB DISTRIBUTION BOARD HS HOUSEHOLD SHELTER ST STORAGE
 RC REINFORCED CONCRETE LEDGE (EXCLUDED FROM STRATA AREA)



Area includes air-con (AC) ledge, balcony and strata void area where applicable. The plans are subject to change as may be approved by relevant authorities. All floor plans are approximate measurements only and are subject to government re-survey. The balcony shall not be enclosed unless with the approved balcony screen. For an illustration of the approved balcony screen, please refer to the diagram annexed hereto as "Annexure A".



Key plan is not drawn to scale

3-BEDROOM FLEXI

Type C3

101 sqm / 1087 sq ft

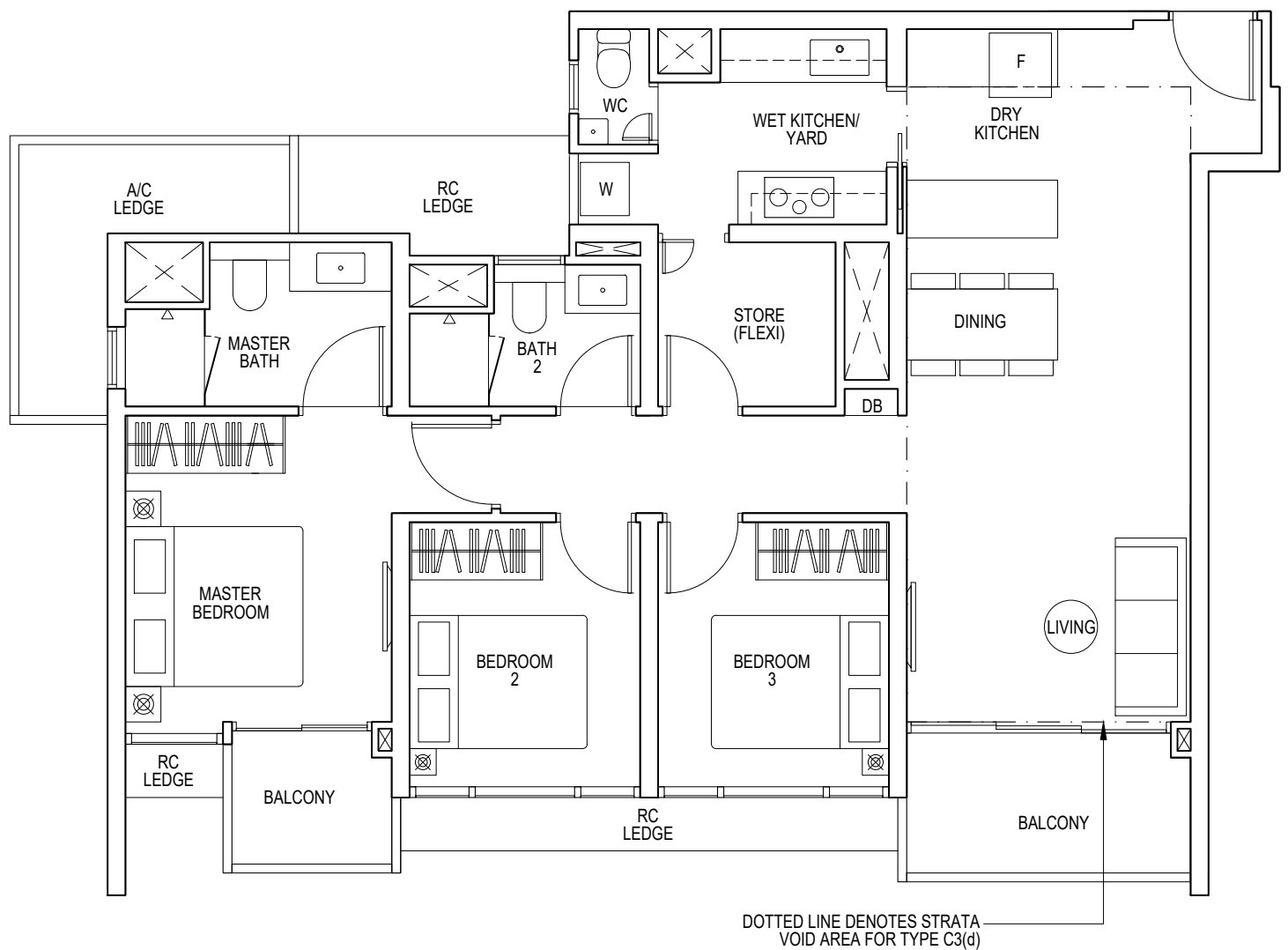
Blk 3: #05-11 to #22-11

Type C3(d)

126 sqm / 1356 sq ft

(inclusive of 25m² strata void over living/dining)

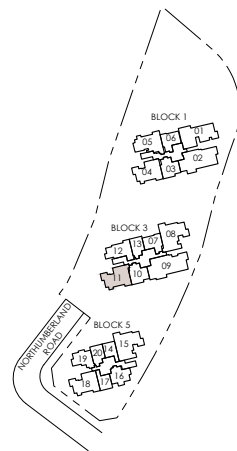
Blk 3: #23-11



F FRIDGE W WASHER/ DRYER DB DISTRIBUTION BOARD HS HOUSEHOLD SHELTER ST STORAGE
 RC REINFORCED CONCRETE LEDGE (EXCLUDED FROM STRATA AREA)



Area includes air-con (A/C) ledge, balcony and strata void area where applicable. The plans are subject to change as may be approved by relevant authorities. All floor plans are approximate measurements only and are subject to government re-survey. The balcony shall not be enclosed unless with the approved balcony screen. For an illustration of the approved balcony screen, please refer to the diagram annexed hereto as "Annexure A".



Key plan is not drawn to scale

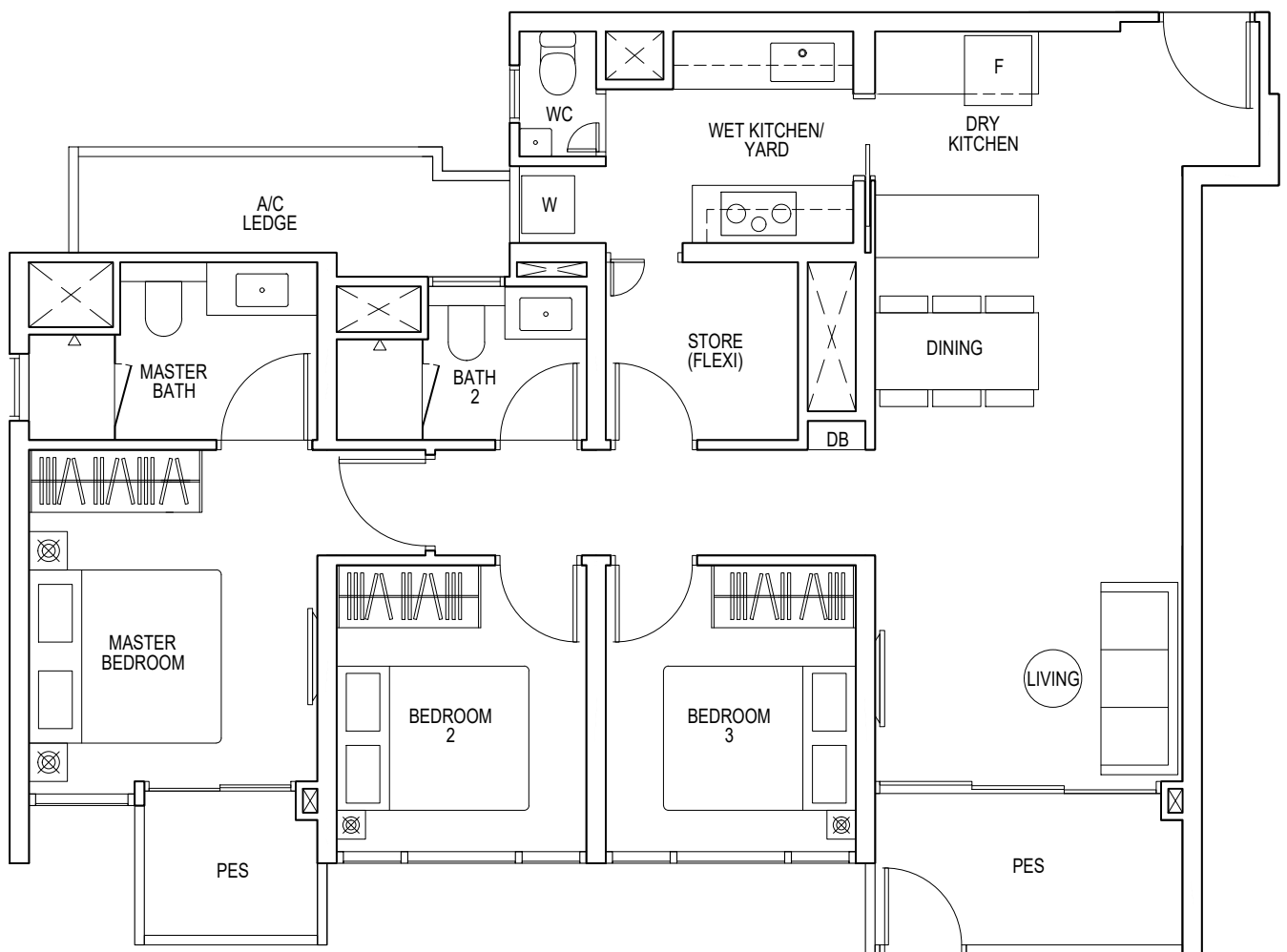


3-BEDROOM FLEXI

Type C3(p)

101 sqm / 1087 sq ft

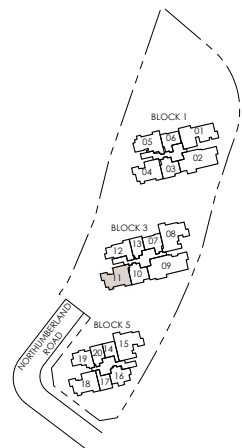
Blk 3: #04-11



F FRIDGE W WASHER/ DRYER DB DISTRIBUTION BOARD HS HOUSEHOLD SHELTER ST STORAGE
 RC REINFORCED CONCRETE LEDGE (EXCLUDED FROM STRATA AREA)



Area includes air-con (A/C) ledge, balcony and strata void area where applicable. The plans are subject to change as may be approved by relevant authorities. All floor plans are approximate measurements only and are subject to government re-survey. The balcony shall not be enclosed unless with the approved balcony screen. For an illustration of the approved balcony screen, please refer to the diagram annexed hereto as "Annexure A".



Key plan is not drawn to scale



3-BEDROOM FLEXI

Type C4

102 sqm / 1098 sq ft

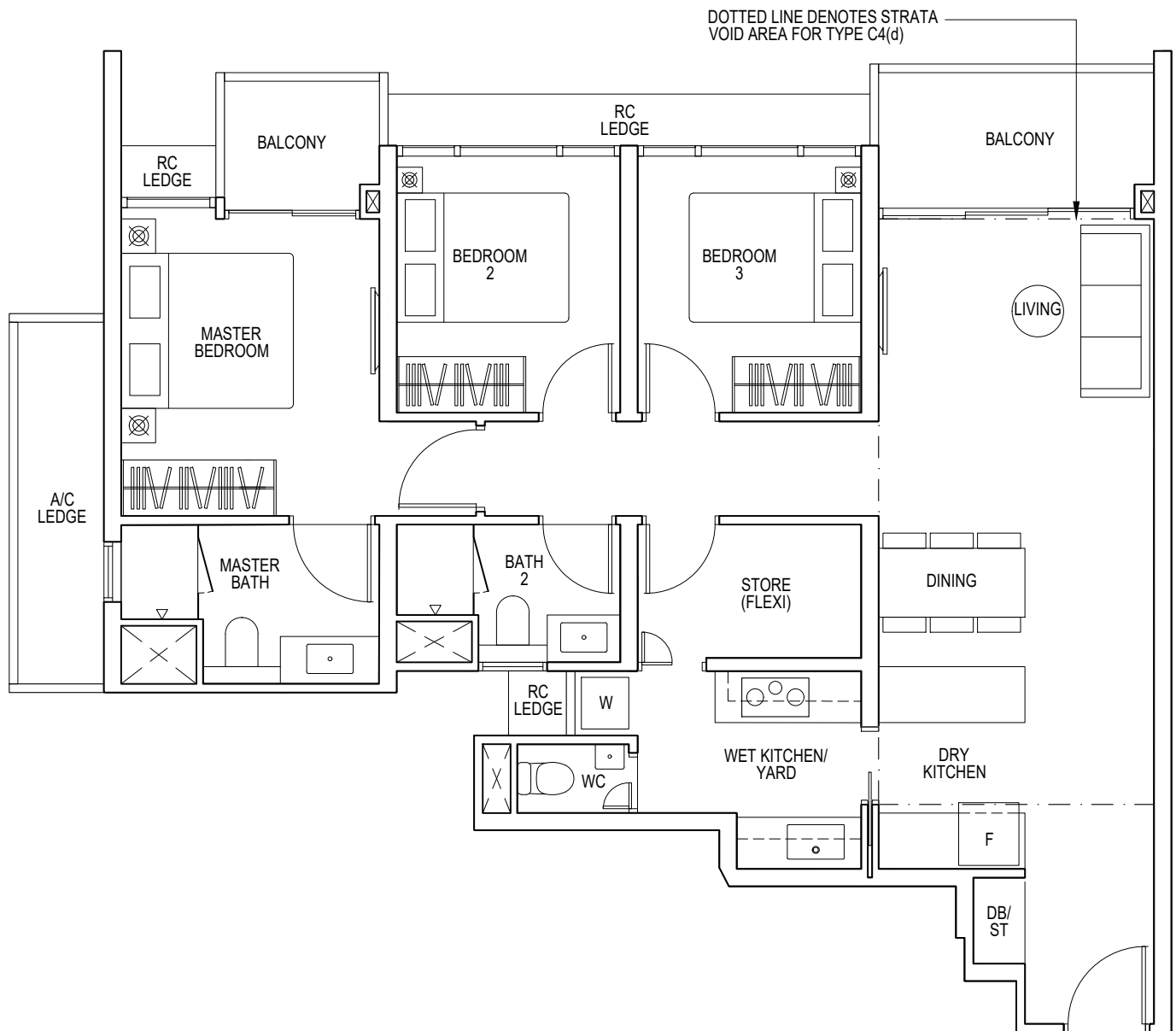
Blk 1: #05-05 to #22-05

Type C4(d)

126 sqm / 1356 sq ft

(inclusive of 24m² strata void over living/dining)

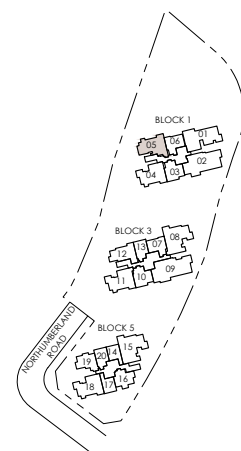
Blk 1: #23-05



F FRIDGE W WASHER/ DRYER DB DISTRIBUTION BOARD HS HOUSEHOLD SHELTER ST STORAGE
 RC REINFORCED CONCRETE LEDGE (EXCLUDED FROM STRATA AREA)



Area includes air-con (A/C) ledge, balcony and strata void area where applicable. The plans are subject to change as may be approved by relevant authorities. All floor plans are approximate measurements only and are subject to government re-survey. The balcony shall not be enclosed unless with the approved balcony screen. For an illustration of the approved balcony screen, please refer to the diagram annexed hereto as "Annexure A".



Key plan is not drawn to scale

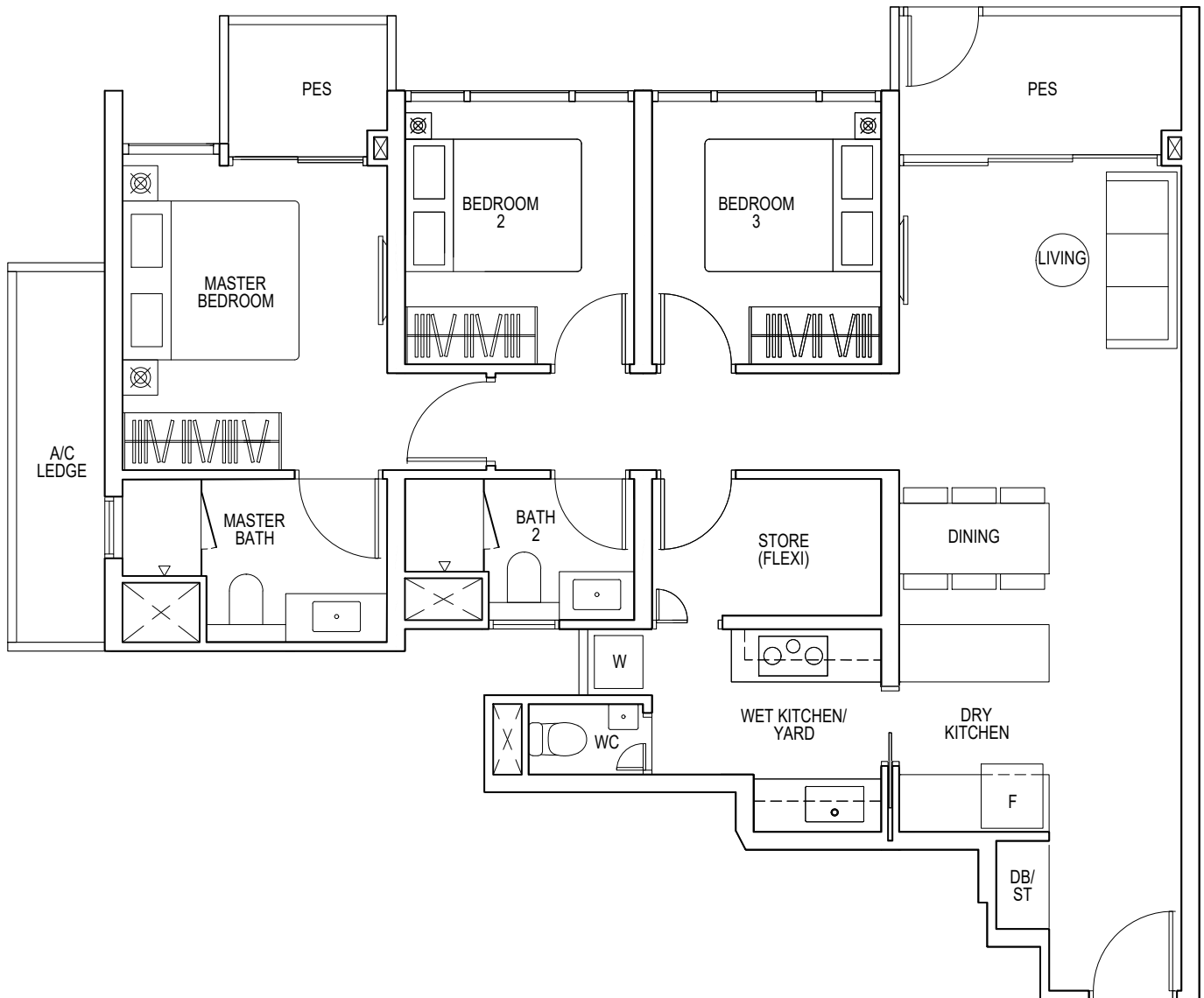


3-BEDROOM FLEXI

Type C4(p)

102 sqm / 1098 sq ft

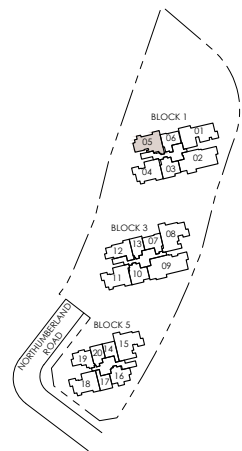
Blk 1: #04-05



F FRIDGE W WASHER/ DRYER DB DISTRIBUTION BOARD HS HOUSEHOLD SHELTER ST STORAGE
 RC REINFORCED CONCRETE LEDGE (EXCLUDED FROM STRATA AREA)



Area includes air-con (A/C) ledge, balcony and strata void area where applicable. The plans are subject to change as may be approved by relevant authorities. All floor plans are approximate measurements only and are subject to government re-survey. The balcony shall not be enclosed unless with the approved balcony screen. For an illustration of the approved balcony screen, please refer to the diagram annexed hereto as "Annexure A".



Key plan is not drawn to scale



4-BEDROOM FLEXI

Type D1

131 sqm / 1410 sq ft

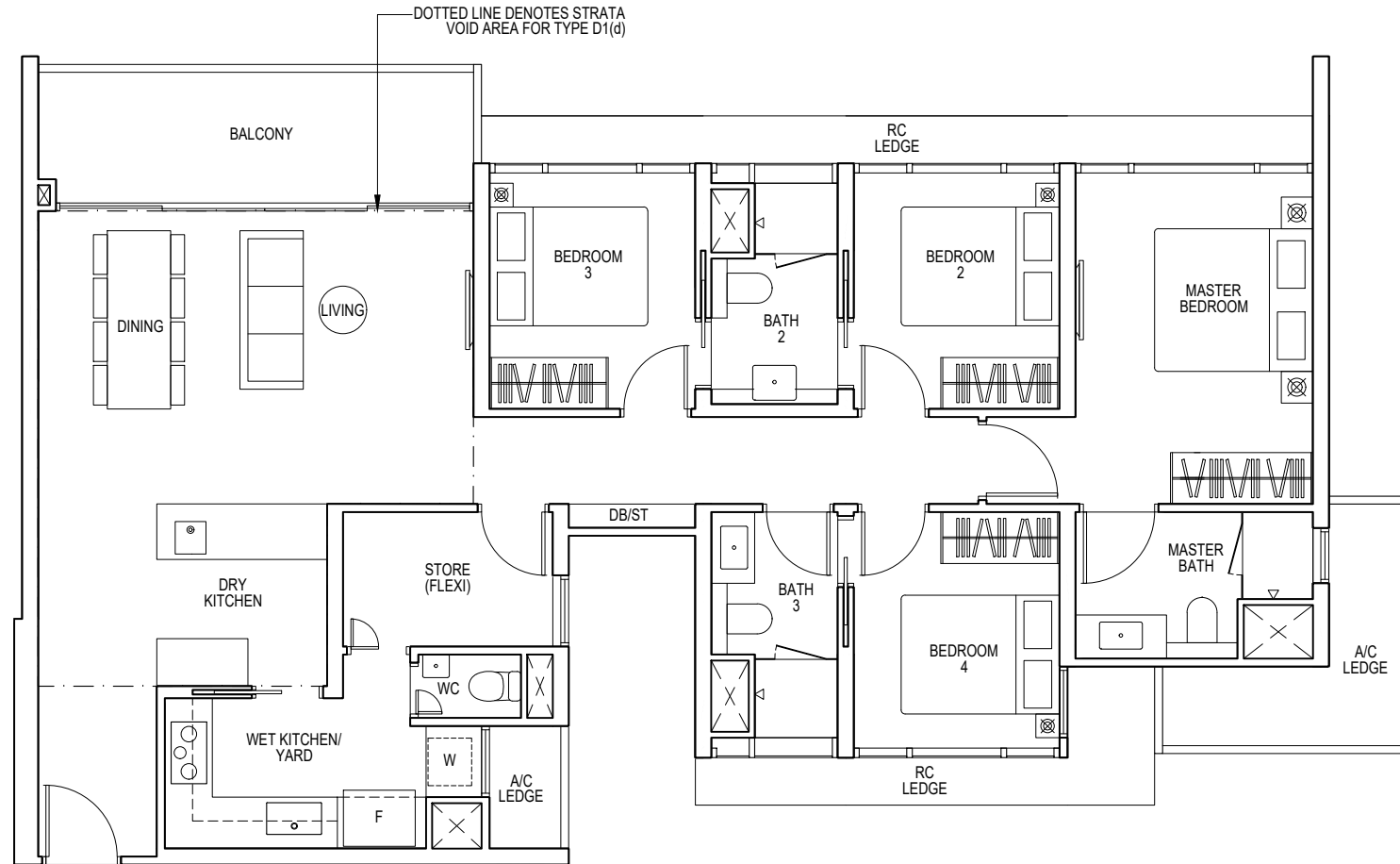
Blk 1: #05-01 to #22-01

Type D1(d)

162 sqm / 1744 sq ft

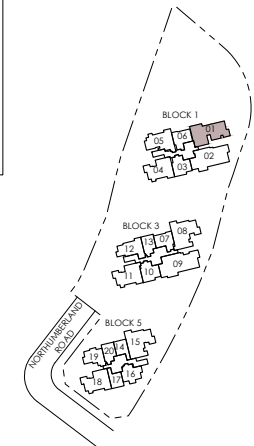
(inclusive of 31m² strata void over living/dining and dry kitchen)

Blk 1: #23-01



F FRIDGE W WASHER/ DRYER DB DISTRIBUTION BOARD HS HOUSEHOLD SHELTER ST STORAGE RC REINFORCED CONCRETE LEDGE (EXCLUDED FROM STRATA AREA)

Area includes air-con (A/C) ledge, balcony and strata void area where applicable. The plans are subject to change as may be approved by relevant authorities. All floor plans are approximate measurements only and are subject to government re-survey. The balcony shall not be enclosed unless with the approved balcony screen. For an illustration of the approved balcony screen, please refer to the diagram annexed hereto as "Annexure A".



Key plan is not drawn to scale

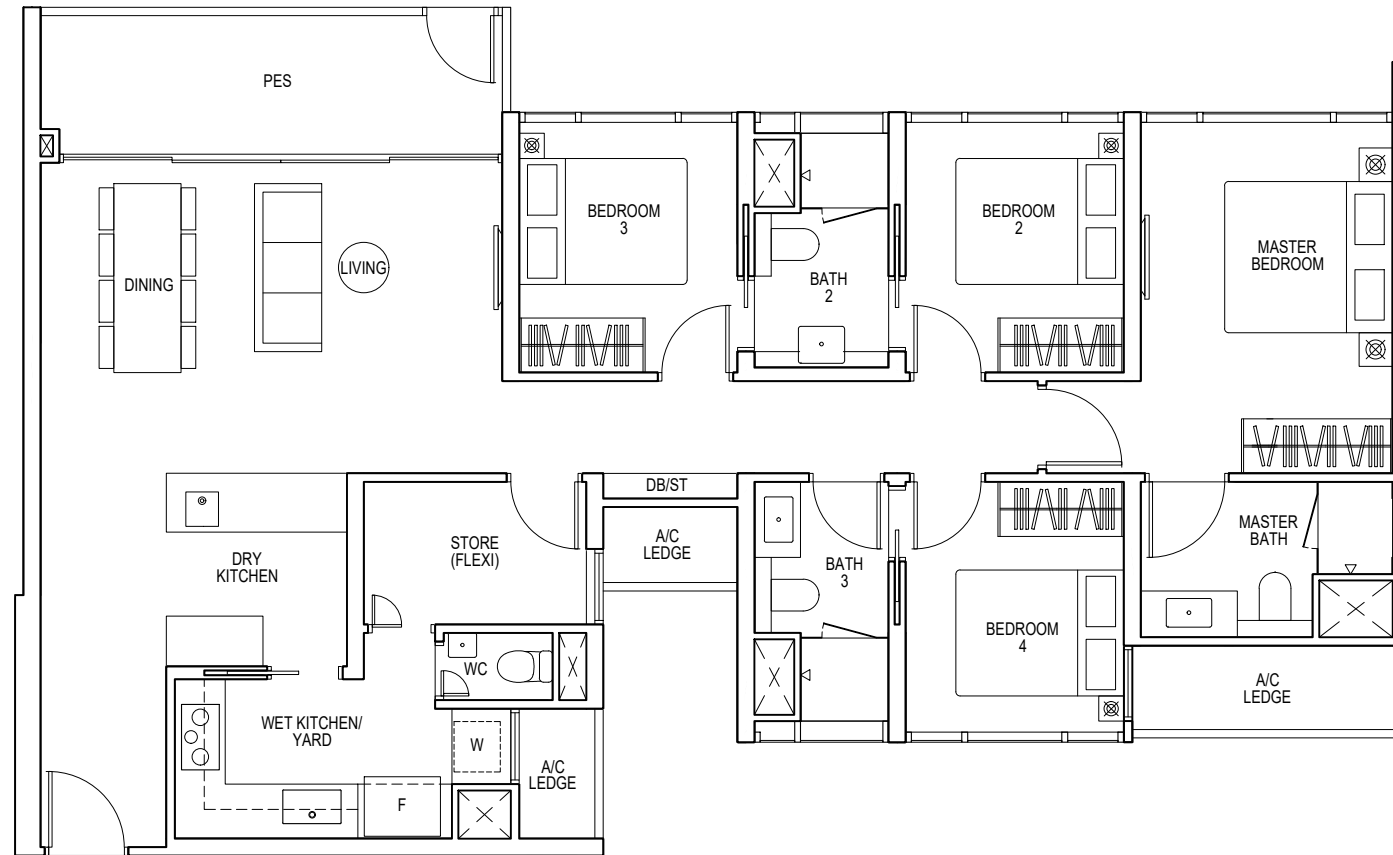


4-BEDROOM FLEXI

Type D1(p)

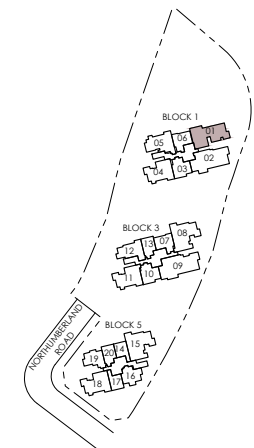
131 sqm / 1410 sq ft

Blk 1: #04-01



F FRIDGE W WASHER/ DRYER DB DISTRIBUTION BOARD HS HOUSEHOLD SHELTER ST STORAGE RC REINFORCED CONCRETE LEDGE (EXCLUDED FROM STRATA AREA)

Area includes air-con (A/C) ledge, balcony and strata void area where applicable. The plans are subject to change as may be approved by relevant authorities. All floor plans are approximate measurements only and are subject to government re-survey. The balcony shall not be enclosed unless with the approved balcony screen. For an illustration of the approved balcony screen, please refer to the diagram annexed hereto as "Annexure A".



Key plan is not drawn to scale



4-BEDROOM DUAL KEY

Type D2DK

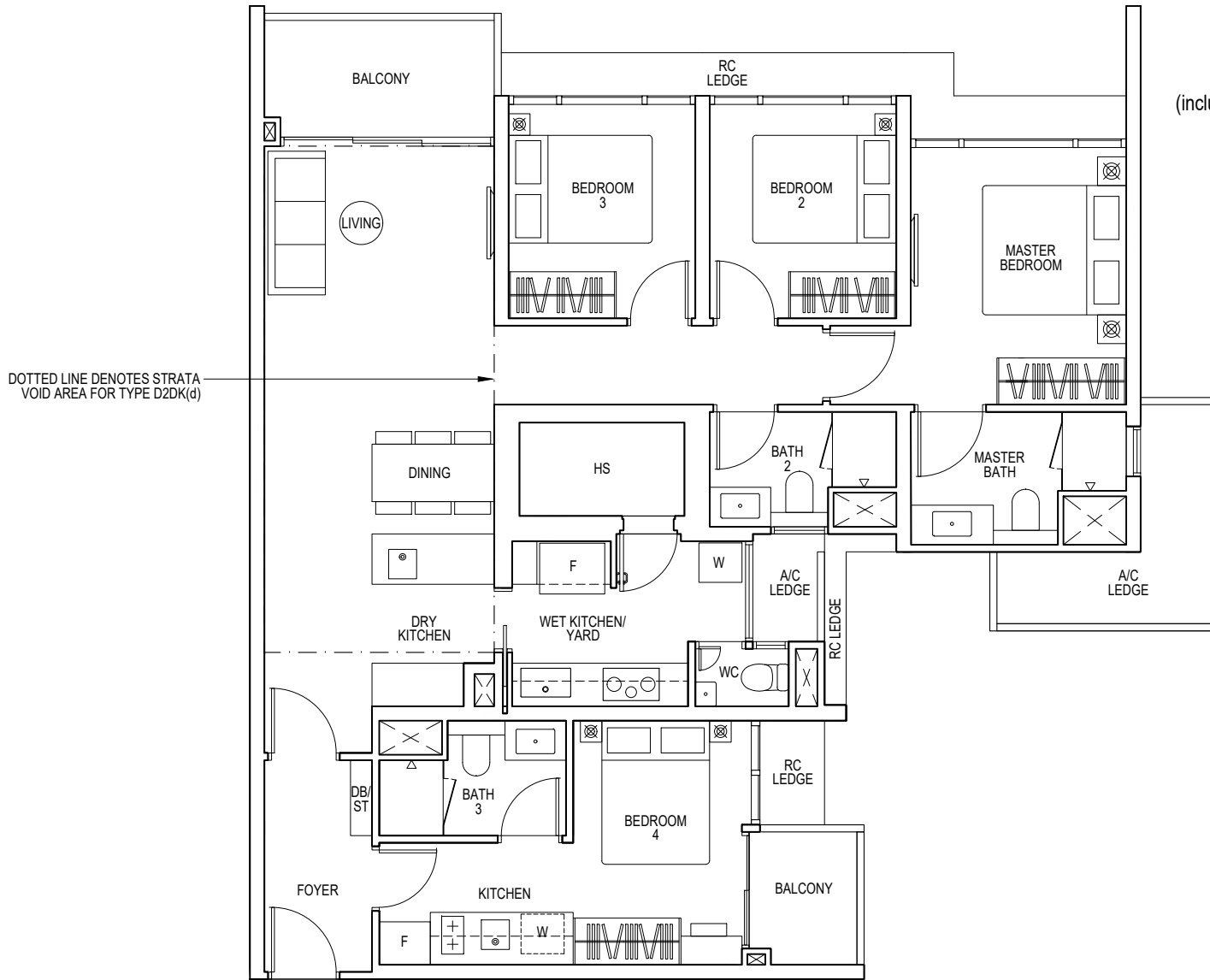
128 sqm / 1378sq ft

Blk 5: #04-15 to #22-15

Type D2DK(d)

153 sqm / 1647 sq ft

(inclusive of 25m² strata void over living/dining and dry kitchen)
Blk 5: #23-15

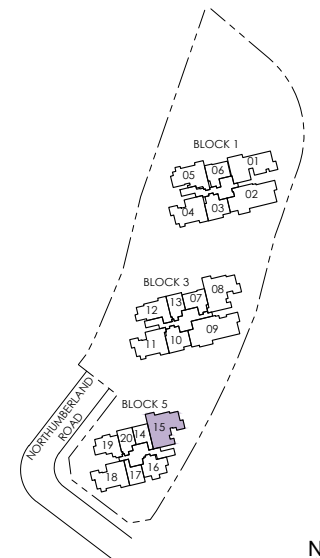


DOTTED LINE DENOTES STRATA VOID AREA FOR TYPE D2DK(d)



F FRIDGE W WASHER/ DRYER DB DISTRIBUTION BOARD HS HOUSEHOLD SHELTER ST STORAGE RC REINFORCED CONCRETE LEDGE (EXCLUDED FROM STRATA AREA)

Area includes air-con (A/C) ledge, balcony and strata void area where applicable. The plans are subject to change as may be approved by relevant authorities. All floor plans are approximate measurements only and are subject to government re-survey. The balcony shall not be enclosed unless with the approved balcony screen. For an illustration of the approved balcony screen, please refer to the diagram annexed hereto as "Annexure A".



Key plan is not drawn to scale

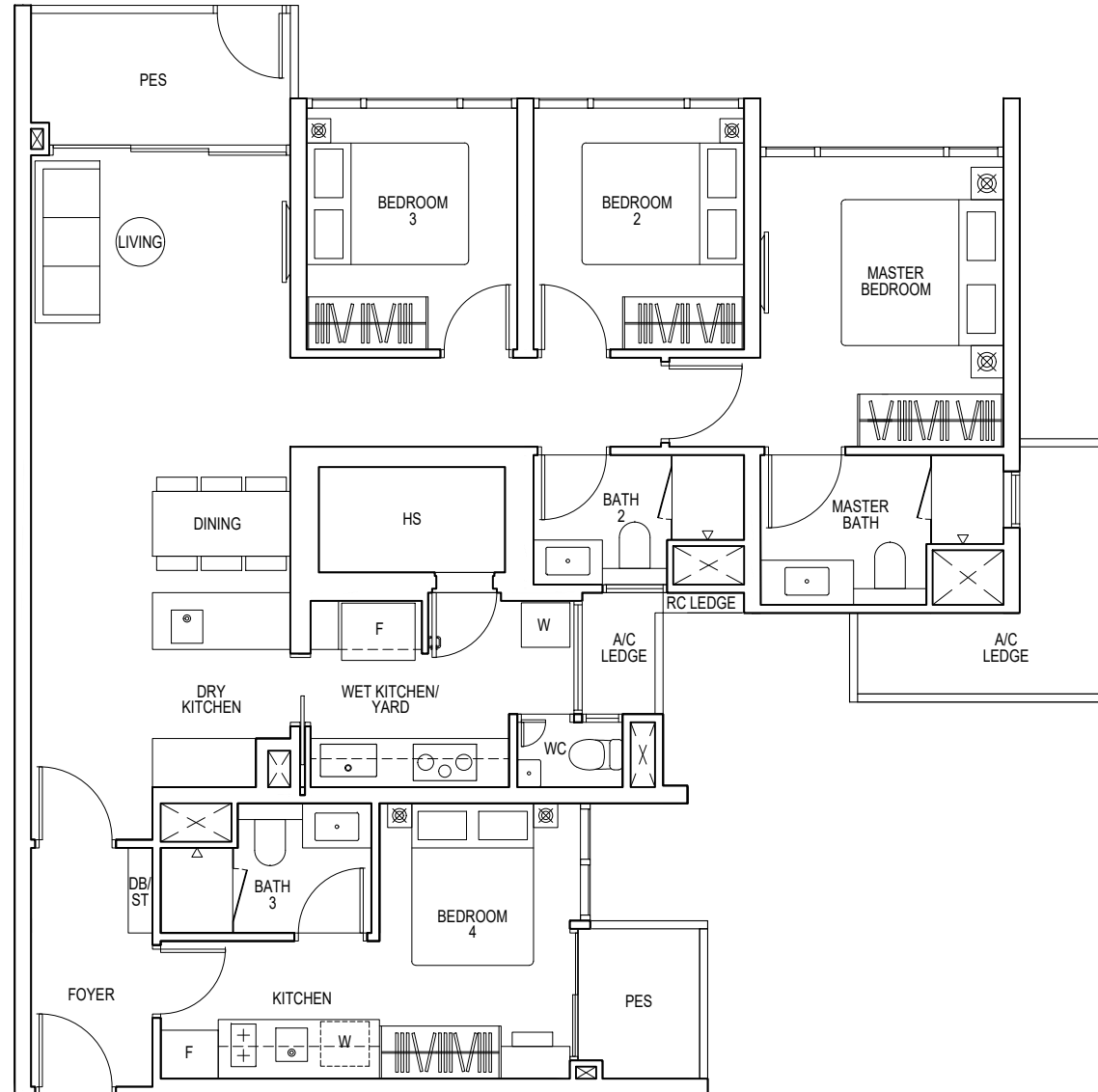


4-BEDROOM DUAL KEY

Type D2DK(p)

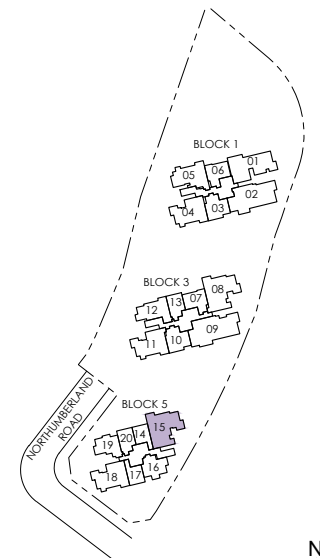
128 sqm / 1378sq ft

Blk 5: #03-15



F FRIDGE W WASHER/ DRYER DB DISTRIBUTION BOARD HS HOUSEHOLD SHELTER ST STORAGE RC REINFORCED CONCRETE LEDGE (EXCLUDED FROM STRATA AREA)

Area includes air-con (A/C) ledge, balcony and strata void area where applicable. The plans are subject to change as may be approved by relevant authorities. All floor plans are approximate measurements only and are subject to government re-survey. The balcony shall not be enclosed unless with the approved balcony screen. For an illustration of the approved balcony screen, please refer to the diagram annexed hereto as "Annexure A".



Key plan is not drawn to scale



4-BEDROOM DUAL KEY

Type D3DK

129 sqm / 1389sq ft

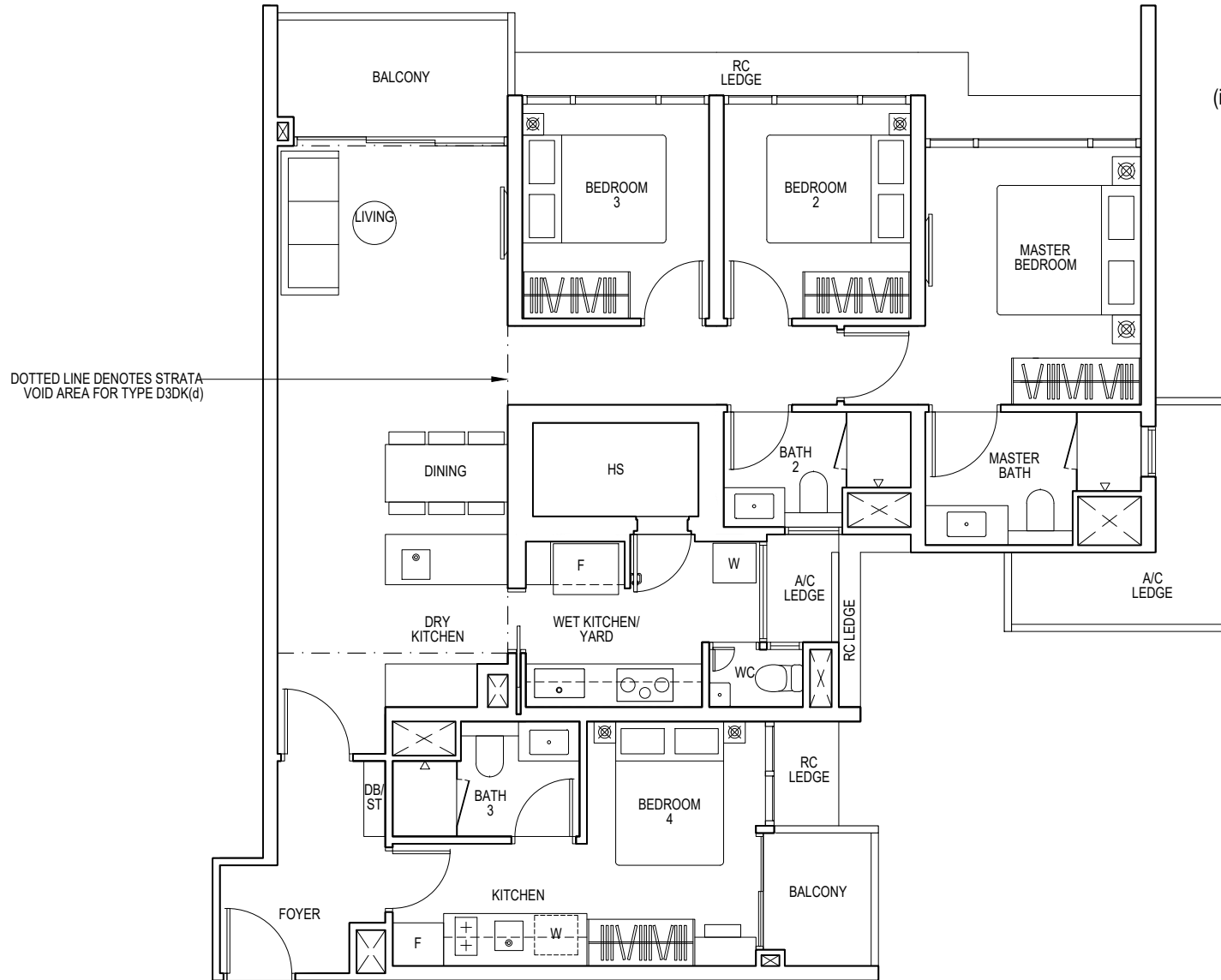
Blk 3: #05-08 to #22-08

Type D3DK(d)

154 sqm / 1658 sq ft

(inclusive of 25m² strata void over living/dining and dry kitchen)

Blk 3: #23-08

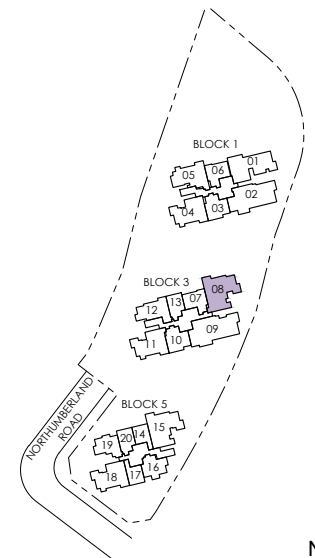


DOTTED LINE DENOTES STRATA VOID AREA FOR TYPE D3DK(d)



F FRIDGE W WASHER/ DRYER DB DISTRIBUTION BOARD HS HOUSEHOLD SHELTER ST STORAGE RC REINFORCED CONCRETE LEDGE (EXCLUDED FROM STRATA AREA)

Area includes air-con (A/C) ledge, balcony and strata void area where applicable. The plans are subject to change as may be approved by relevant authorities. All floor plans are approximate measurements only and are subject to government re-survey. The balcony shall not be enclosed unless with the approved balcony screen. For an illustration of the approved balcony screen, please refer to the diagram annexed hereto as "Annexure A".



Key plan is not drawn to scale

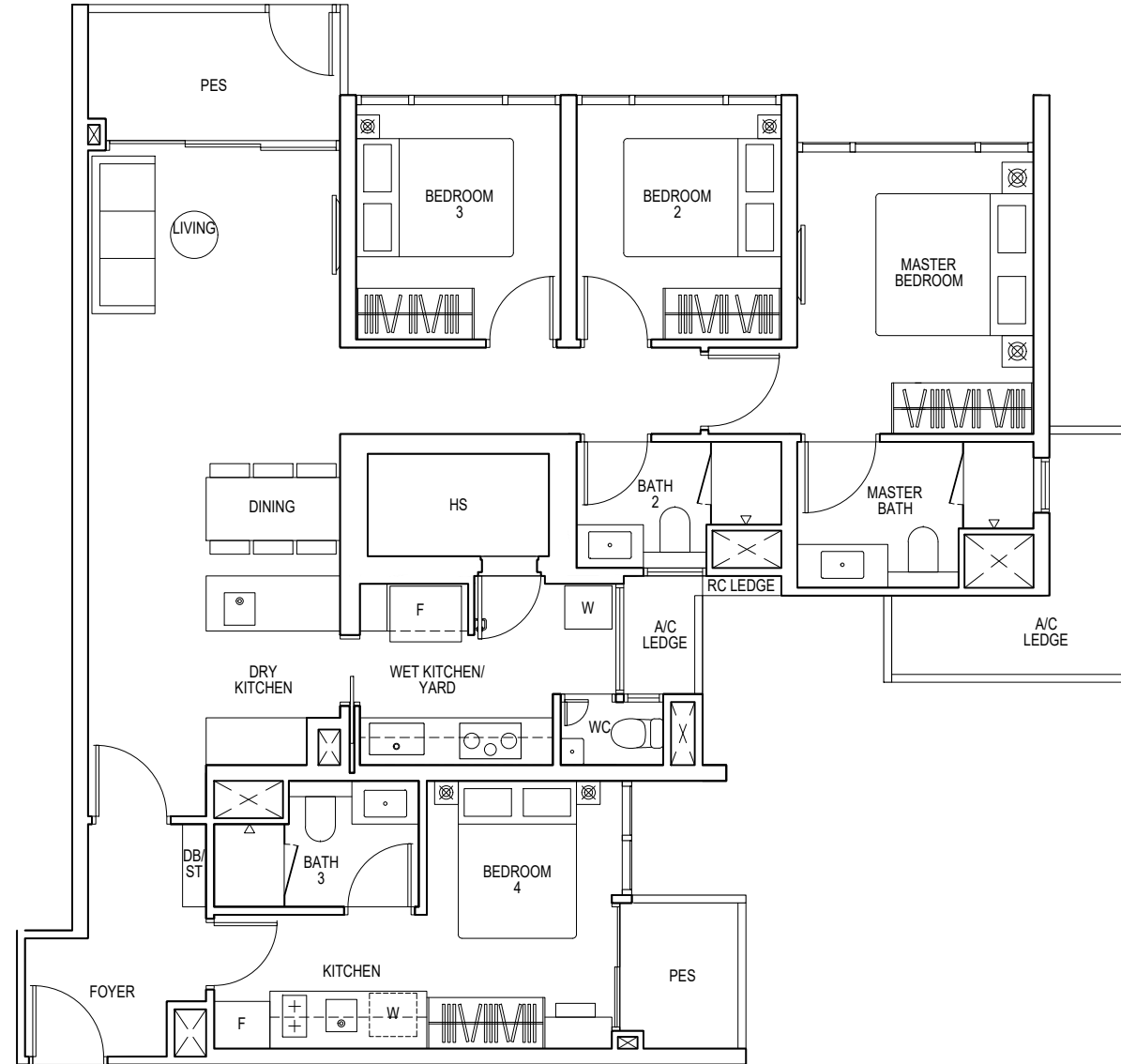


4-BEDROOM DUAL KEY

Type D3DK(p)

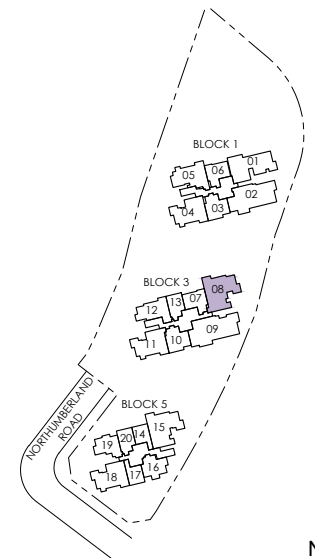
129 sqm / 1389sq ft

Blk 3: #04-08



F FRIDGE W WASHER/ DRYER DB DISTRIBUTION BOARD HS HOUSEHOLD SHELTER ST STORAGE RC REINFORCED CONCRETE LEDGE (EXCLUDED FROM STRATA AREA)

Area includes air-con (A/C) ledge, balcony and strata void area where applicable. The plans are subject to change as may be approved by relevant authorities. All floor plans are approximate measurements only and are subject to government re-survey. The balcony shall not be enclosed unless with the approved balcony screen. For an illustration of the approved balcony screen, please refer to the diagram annexed hereto as "Annexure A".



Key plan is not drawn to scale



5-BEDROOM

Type E1

147 sqm / 1582 sq ft

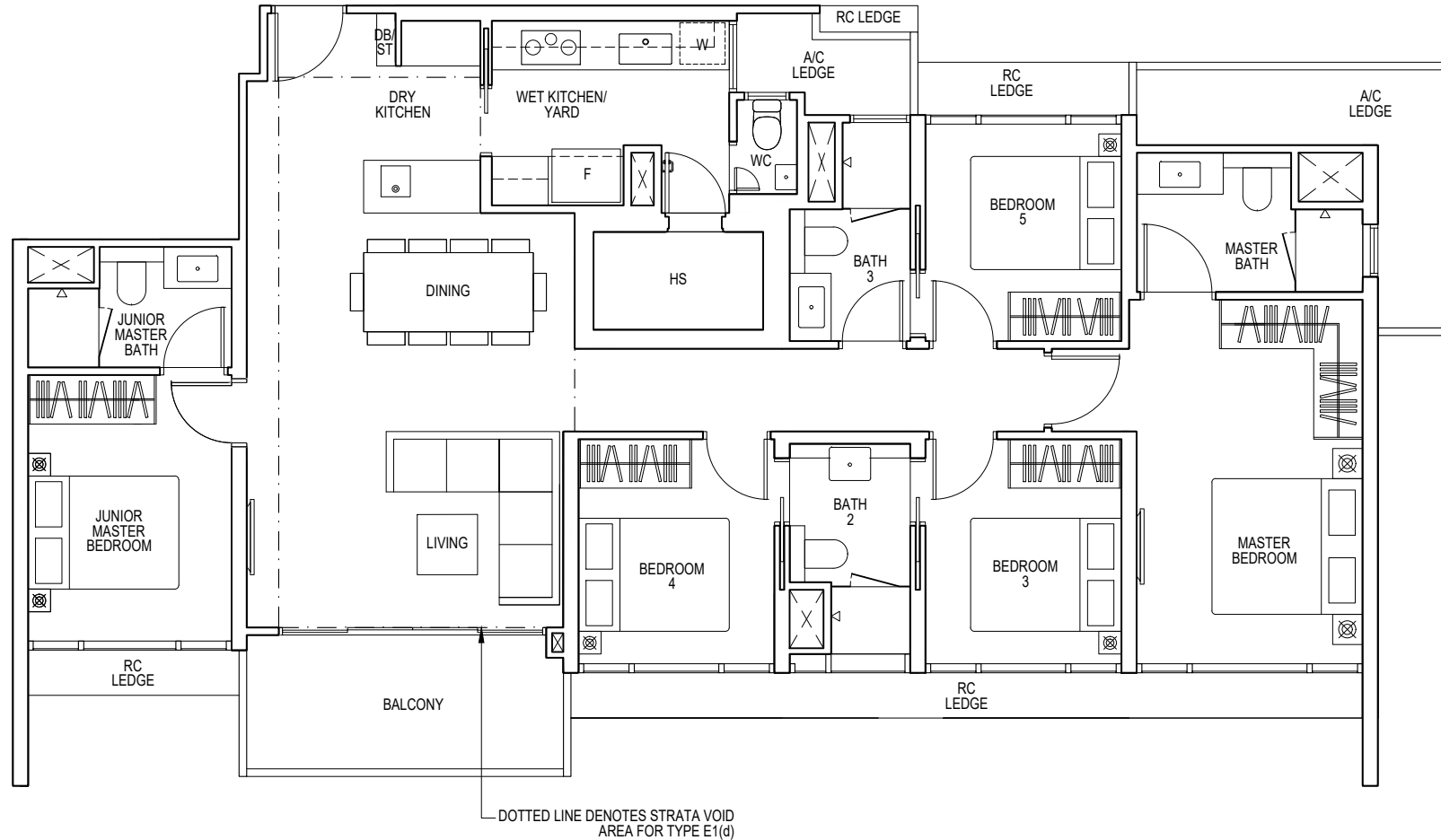
Blk 1: #05-02 to #22-02

Type E1(d)

176 sqm / 1894 sq ft

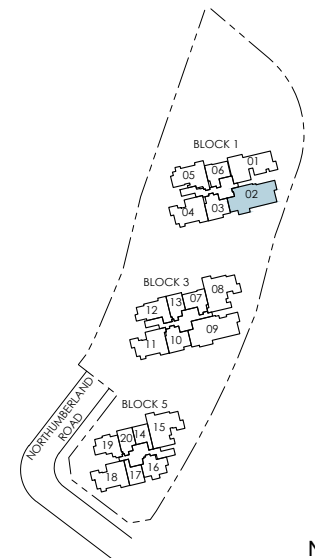
(inclusive of 29m² strata void over living/dining and dry kitchen)

Blk 1: #23-02



F FRIDGE W WASHER/ DRYER DB DISTRIBUTION BOARD HS HOUSEHOLD SHELTER ST STORAGE RC REINFORCED CONCRETE LEDGE (EXCLUDED FROM STRATA AREA)

Area includes air-con (A/C) ledge, balcony and strata void area where applicable. The plans are subject to change as may be approved by relevant authorities. All floor plans are approximate measurements only and are subject to government re-survey. The balcony shall not be enclosed unless with the approved balcony screen. For an illustration of the approved balcony screen, please refer to the diagram annexed hereto as "Annexure A".



Key plan is not drawn to scale

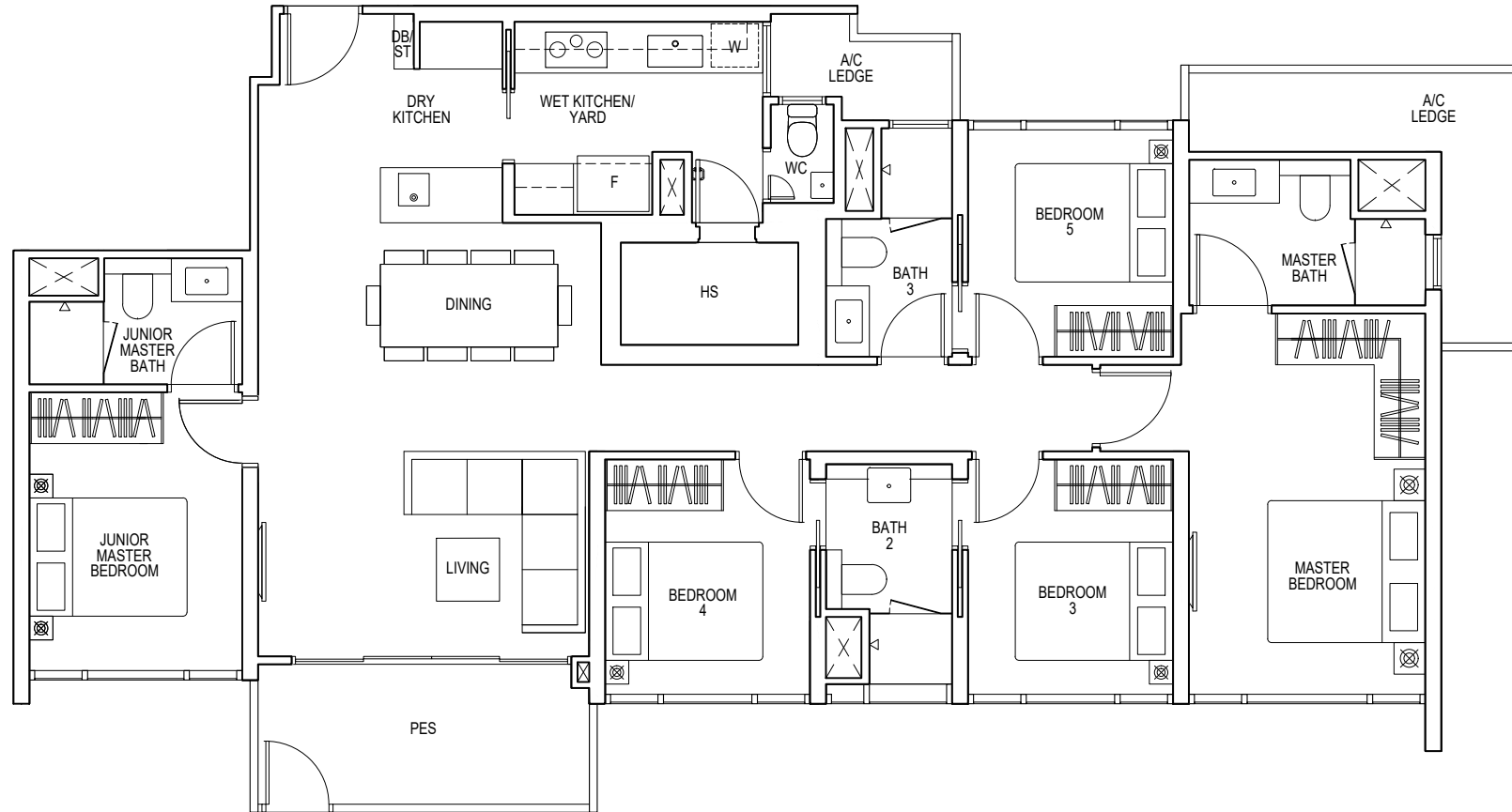


5-BEDROOM

Type E1(p)

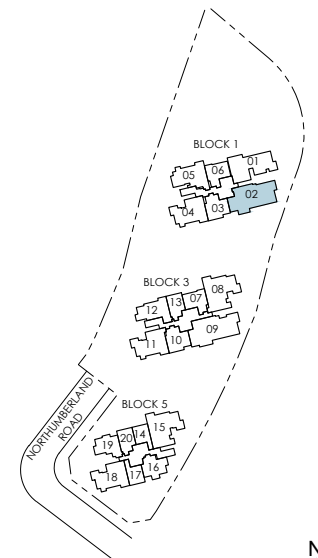
147 sqm / 1582 sq ft

Blk 1: #04-02



F FRIDGE W WASHER/ DRYER DB DISTRIBUTION BOARD HS HOUSEHOLD SHELTER ST STORAGE RC REINFORCED CONCRETE LEDGE (EXCLUDED FROM STRATA AREA)

Area includes air-con (A/C) ledge, balcony and strata void area where applicable. The plans are subject to change as may be approved by relevant authorities. All floor plans are approximate measurements only and are subject to government re-survey. The balcony shall not be enclosed unless with the approved balcony screen. For an illustration of the approved balcony screen, please refer to the diagram annexed hereto as "Annexure A".



Key plan is not drawn to scale



5-BEDROOM PREMIUM

Type E2P

156 sqm / 1679 sq ft

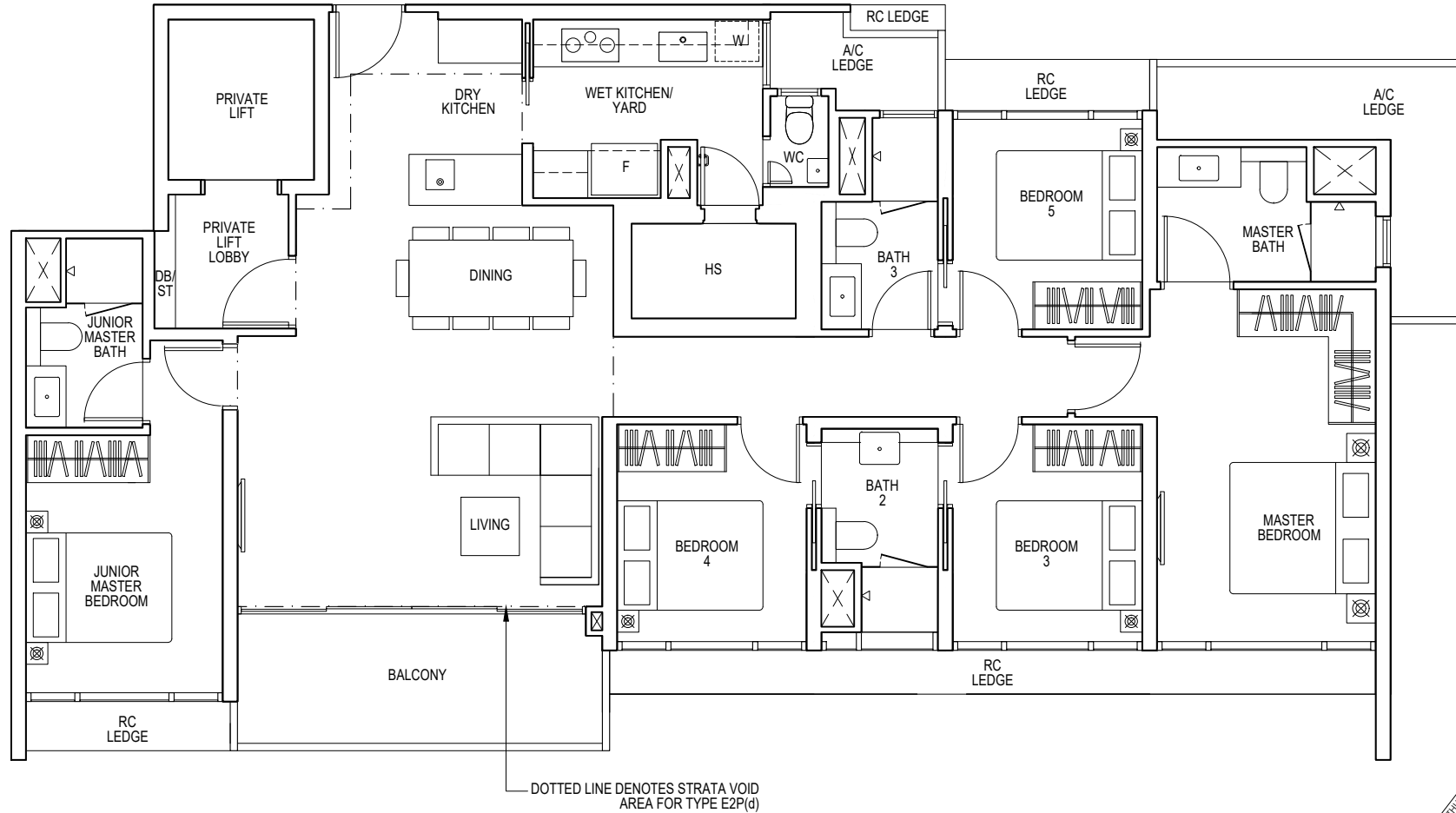
Blk 3: #05-09 to #22-09

Type E2P(d)

190 sqm / 2045 sq ft

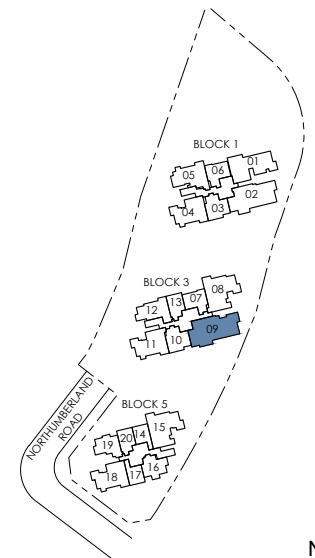
(inclusive of 34m² strata void over living/dining and dry kitchen)

Blk 3: #23-09



F FRIDGE W WASHER/ DRYER DB DISTRIBUTION BOARD HS HOUSEHOLD SHELTER ST STORAGE RC REINFORCED CONCRETE LEDGE (EXCLUDED FROM STRATA AREA)

Area includes air-con (A/C) ledge, balcony and strata void area where applicable. The plans are subject to change as may be approved by relevant authorities. All floor plans are approximate measurements only and are subject to government re-survey. The balcony shall not be enclosed unless with the approved balcony screen. For an illustration of the approved balcony screen, please refer to the diagram annexed hereto as "Annexure A".



Key plan is not drawn to scale

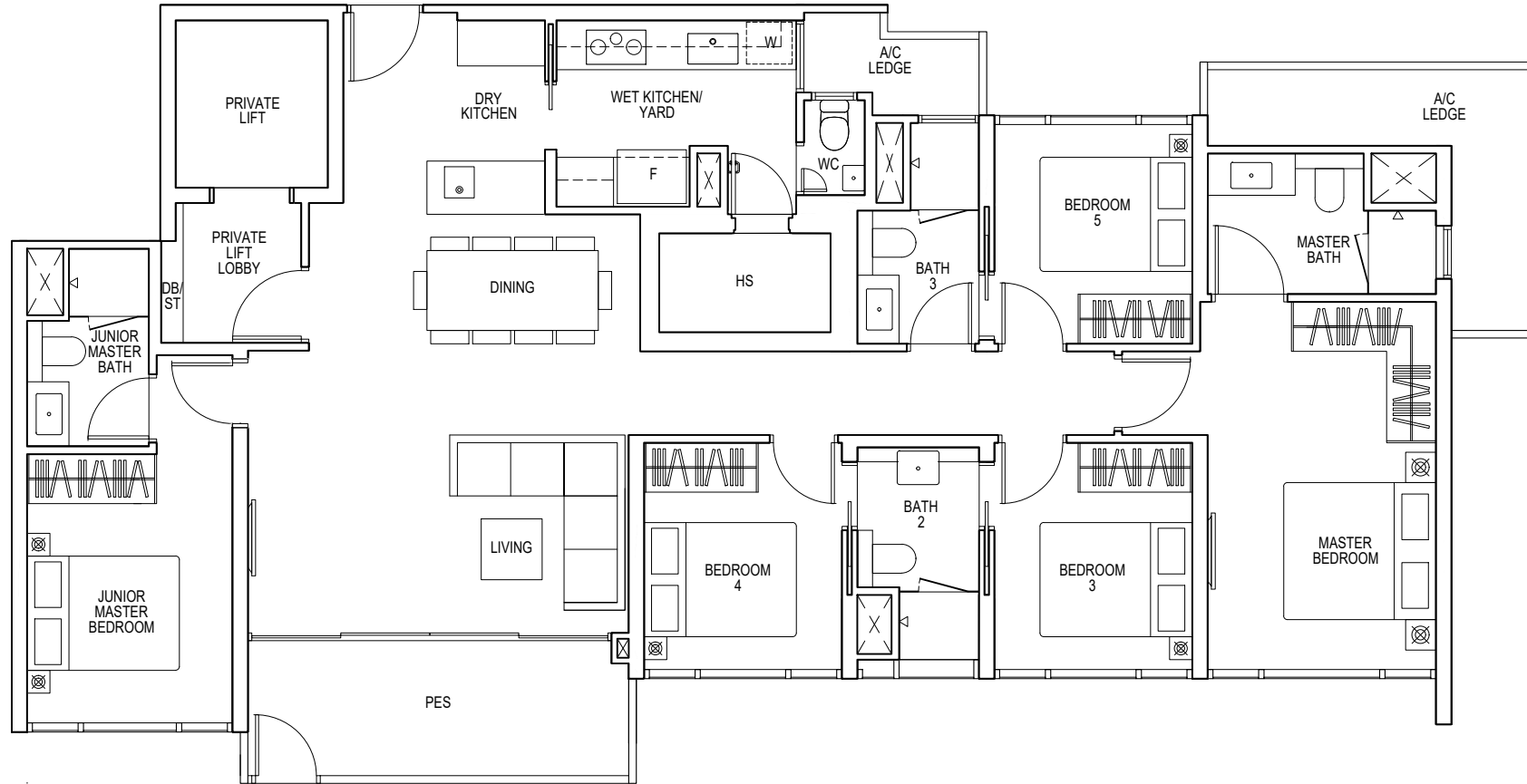


5-BEDROOM PREMIUM

Type E2P(p)

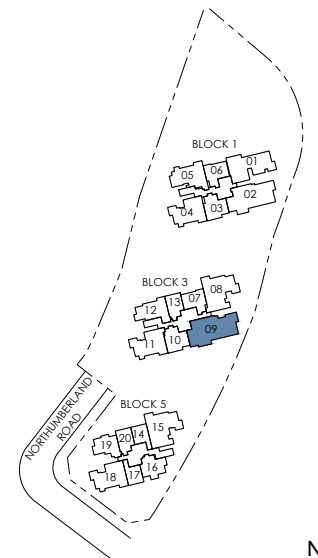
156 sqm / 1679 sq ft

Blk 3: #04-09



F FRIDGE W WASHER/ DRYER DB DISTRIBUTION BOARD HS HOUSEHOLD SHELTER ST STORAGE RC REINFORCED CONCRETE LEDGE (EXCLUDED FROM STRATA AREA)

Area includes air-con (A/C) ledge, balcony and strata void area where applicable. The plans are subject to change as may be approved by relevant authorities. All floor plans are approximate measurements only and are subject to government re-survey. The balcony shall not be enclosed unless with the approved balcony screen. For an illustration of the approved balcony screen, please refer to the diagram annexed hereto as "Annexure A".



Key plan is not drawn to scale

